

MemPro 4000 D - 10 000 D-SS

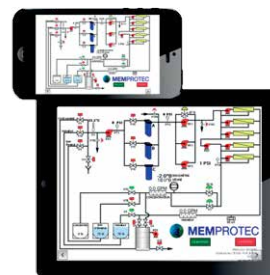
REVERSE OSMOSIS
SS SERIES MEMPRO STAINLESS

- Superior quality & performance
- Unimodular design
- Positive recirculation on membrane elements
- Stainless steel construction frame & plumbing
- Stainless steel pumps with industrial motors (top mounted)
- Stainless steel integrated CIP tank
- Ventilated stainless steel electrical box
- Permeate & concentrate valve panel
- Option of expansion up to 20 elements & 5 high pressure pumps
- Conductivity meter & digital temperature monitor
- Low pressure & high temperature safety
- 2 independant banks of 3 X 20 inch filters
- Strainer included
- 5 years limited warranty



Options

- + Drainage by air «Mempro Flush» patent # US 8,889,001 B2
- + Individual vessel permeate flowmeters
- + HMI with web access
- + Interstages booster pump with VFD
- + High-pressure housing 600 PSI vs 500 PSI
- + Acid pump
- + Inline brix monitor
- + SS plumbing
- + Soap filter
- + Complete automation
- + 230V - 460V - 600V - 3 phases
- + 1 independant bank of 7 X 20 inch filters in SS



Optional
Remotely controlled
via web access

Model	Membrane Quantity	Prefilter 5 microns	Feed pump	Pressure pump	Recirculation pump	Amps. 240 volts	Dimensions (WxDxH)
MemPro 4000 D-SS	4 x 8"	6 x 20"	1 x 3 hp	2 x 5 hp	2 x 3 hp	82	109" x 36" x 76"
MemPro 6000 D-SS	6 x 8"	6 x 20"	1 x 3 hp	3 x 5 hp	3 x 3 hp	114	109" x 36" x 76"
MemPro 8000 D-SS*	8 x 8"	6 x 20"	1 x 5 hp	2 x 7,5 hp	4 x 3 hp	139	109" x 38½" x 76"
MemPro 10 000 D-SS	10 x 8"	6 x 20"	1 x 5 hp	2 x 7,5 hp	5 x 3 hp	157	109" x 38½" x 96"

*Model identified in the picture