

# MemPro 12 000 DD - 20 000 DD-SS

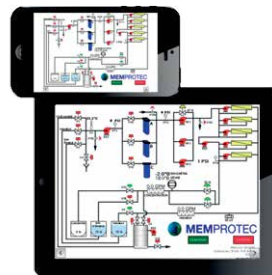
REVERSE OSMOSIS  
SS SERIES MEMPRO STAINLESS STEEL

- Superior quality & performance
- Unimodular design
- Positive recirculation on membrane elements
- Stainless steel double ladder frame & plumbing
- Stainless steel pumps with Industrial motors (top mounted)
- Stainless steel integrated CIP tank
- Ventilated stainless steel electrical box
- Permeate & concentrate valve panel
- Option of expansion up to 20 elements & 5 high pressure pumps
- Programmable logic controller
- Conductivity meter & digital temperature monitor
- Low pressure & high temperature safety
- 2 independant banks of 7 X 20 inch filters in SS
- Strainer included
- 5 years limited warranty



## Options

- + Wash water management with pH meter
- + Drainage by air «Mempro Flush» patent # US 8,889,001 B2
- + Individual vessel permeate flowmeters
- + HMI with web access
- + Interstages booster pump with VFD
- + High-pressure housing 600 PSI vs 500 PSI
- + Acid pump
- + Inline brix monitor
- + SS plumbing
- + SS soap filter
- + Complete automation
- + 230V - 460V - 600V - 3 phases



**Optional**  
Remotely controlled  
via web access

Model	Membrane Quantity	Prefilter 5 microns	Feed pump	Pressure pump	Recirculation pump	Amps. 240 volts	Dimensions (WxDxH)
MemPro 12 000 DD-SS	12 x 8"	2 x 7 x 20"	7,5 hp	3 x 7,5 hp	6 x 3 hp	203	112" x 53" x 75"
MemPro 14 000 DD-SS	14 x 8"	2 x 7 x 20"	7,5 hp	3 x 7,5 hp	7 x 3 hp	216	112" x 53" x 75"
MemPro 16 000 DD-SS	16 x 8"	2 x 7 x 20"	7,5 hp	3 x 7,5 hp	8 x 3 hp	229	112" x 53" x 75"
MemPro 18 000 DD-SS	18 x 8"	2 x 7 x 20"	7,5 hp	4 x 7,5 hp	9 x 3 hp	278	112" x 53" x 75"
MemPro 20 000 DD-SS*	20 x 8"	2 x 7 x 20"	7,5 hp	4 x 7,5 hp	10 x 3 hp	291	112" x 53" x 96"

\*Model identified in the picture