

# MemPro 1000 H - 6000 H-SS

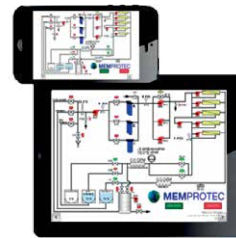
REVERSE OSMOSIS  
SÉRIE MEMPRO-SS EN ACIER INOX

- Superior quality & performance
- Modular conception
- Positive recirculation on membrane elements
- Stainless steel construction frame & plumbing
- Stainless steel pumps with industrial motors (top mounted)
- Gould stainless steel feed pump
- Stainless steel modular CIP tank
- Ventilated stainless steel electrical box
- Permeate & concentrate valve panel
- Option of expansion up to 8 elements & 4 high pressure pumps
- Conductivity meter & digital temperature monitor
- Low pressure & high temperature safety
- 2 independant banks of 2 X 20 inch filter housings
- Strainer included
- 5 years limited warranty



## Options

- + Wash water management with pH meter
- + Drainage by air «Mempro Flush» patent # US 8,889,001 B2
- + Individual vessel permeate flow meters
- + HMI with web access
- + Interstages booster pumps
- + High-pressure housing 600 PSI vs 500 PSI
- + Acid pump
- + 5 hp Gould stainless steel feed pump
- + Inline brix monitor
- + SS valves
- + 230V - 460V - 600V - 3 phases
- + Complete automation



**Optional**  
Remotely controlled  
via web access

Model	Membrane Quantity	Prefilter 5 microns	Feed pump	Pressure pump	Recirculation pump	Amps. 240 volts	Dimensions (WxDxH)
MemPro 1000 H-SS	1 x 8"	4 x 20"	2 hp	1 x 5 hp	1 x 1,5 hp	39	69" x 33 1/2" x 73" + 19"
MemPro 2000 H-SS	2 x 8"	4 x 20"	2 hp	1 x 5 hp	2 x 1,5 hp	46	69" x 33 1/2" x 73" + 19"
MemPro 3000 H-SS	3 x 8"	4 x 20"	2 hp	2 x 5 hp	3 x 1,5 hp	75	69" x 33 1/2" x 73" + 19"
MemPro 4000 H-SS*	4 x 8"	4 x 20"	2 hp	2 x 5 hp	4 x 1,5 hp	82	69" x 33 1/2" x 73" + 19"
MemPro 5000 H-SS	5 x 8"	4 x 20"	5 hp	3 x 5 hp	5 x 1,5 hp	110	69" x 33 1/2" x 92" + 19"
MemPro 6000 H-SS	6 x 8"	4 x 20"	5 hp	3 x 5 hp	6 x 1,5 hp	117	69" x 43" x 92" + 19"

\*Model identified in the picture