



Since 2004

MEMPROTEC

Maple sugaring equipment





22 YEARS

*dedicated to making your
satisfaction our priority!*

Dear Maple Producers,

We are pleased to present our catalog of maple syrup equipment. In this new edition, we are proud to introduce a new line of reverse osmosis systems, the HD-SS Series, featuring both single and double RO posts and offering over 50 membrane configuration options. We can customize this reverse osmosis system to meet YOUR specific needs and provide you with the most modular and compact RO system in the maple industry.

Memprotec continuously works to advance the automation of our RO systems. We develop, improve, and refine our products every day to offer you the smartest and most appreciated automation in the maple industry.

Since 2004, Memprotec has specialized in maple sap reverse osmosis systems, offering a complete range for both small and large maple producers. We undoubtedly have a model that fits your needs and your budget, ask us about it!

As always, it is a pleasure for our team and our distributors to provide you with the best after-sales service in the maple industry.

Once again, this year, we are holding our open house events, twice annually: in Swanton, Vermont, at the end of April, and in Chesterville, Québec, in mid-May. These events are a great opportunity to meet many of you, present our latest innovations, and advise you on the best RO system for your operation. Come meet the Membrane Technology Pros at Memprotec in Chesterville.

The entire Memprotec team wishes you an excellent upcoming maple season.

Alexandre, Denis and Anne-Marie Côté

Testimonies OF OUR CUSTOMERS

Sylvain Caron

I chose Memprotec Reverse Osmosis System because I was looking for a company that specialized only in the field of Reverse Osmosis Systems. After discussion with Mr. Denis Côté and visiting a few producers using Memprotec Reverse Osmosis Systems, the choice was easy to make. It is important to have efficient Reverse Osmosis Systems during the sugaring season, because Reverse Osmosis is the heart of the sugaring operation! The after-sales service and during the season is excellent! The technicians are always available to answer my questions! I would recommend Memprotec, because there Reverse Osmosis is efficient, compact and reliable! I am satisfied with our three Memprotec Reverse Osmosis Systems, because they are easy to use and the service is impeccable!

80 000
taps

Saint-Joseph-de-Madawaska
Nouveau-Brunswick

Yves Bonin

I purchased my first Memprotec Reverse Osmosis System in 2014. Since then, I purchase two other ones and I have always been satisfied with the performance and reliability. The products are of good quality and easy to use. The technical team is very dedicated and the customer service is very good.

4 300
taps

Saint-Thomas
Québec

Laurent Breton

The story began in Plessisville during a meeting at the Maple Festival. I was confident in having a good Reverse Osmosis System for my spring 2004. The neighbors were already intrigued to see my new machine working! It was a success. The following year, I had three of my neighbors who purchased Memprotec Reverse Osmosis System! Thank you to the Memprotec team for your quality service over the years.

3 500
taps

Saint-Ferdinand
Québec



Sylvain Caron



Yves Bonin



Laurent Breton

TABLE OF CONTENTS

Memprotec

- 06** Reverse osmosis
- 20** Industrial products
- 21** Accessories
- 22** Membranes and Cleaners
- 24** Syrup filter press and Glass media filters
- 25** White PVC
- 26** Camlock adapters, Valves
- 27** Quick clamp fittings, Connecting system

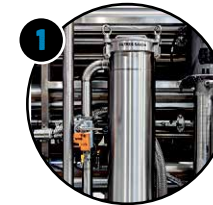
Plastech Chalumo

- 28** Spouts
- 29** Connectors
- 31** Accesories

- 32** Distributors

MEMPROSMART

The most intelligent
and beloved automation
in the industry!



1 Soap filter



2 SS 3A
Motorized
valves



3 CIP Tank
soap pump



4 pH control



5 Acid pump



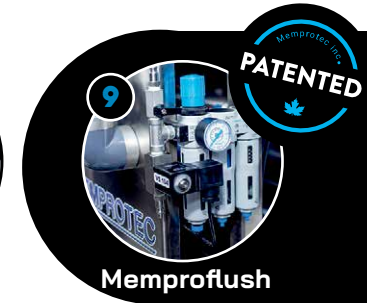
6 Remote Web
access



7 Brix control



8 Prefilters
management



9 Memproflush

- Intelligent operation management
- Automatic tank selection
- Tank level control & monitoring
- Intelligent automated start
- Intelligent pressure management
- Intelligent inline brix management
- System performance management
- Automatic concentrate air «MemPro Flush»
- Intelligent C.I.P. and rinsing
- Remote control & monitoring via web access
- Automated prefilter management
- PWP report by e-mail
- Soap filter management



ULTRA COMPACT SYSTEM
ULTRA MODULAR
COMPLETE AUTOMATION
SUPERIOR PERFORMANCE

With an intelligent reverse osmosis
MEMPROTEC system, you have the
possibility to automate gradually
according to your budget.

Other automated
models available
MemPro HI-SS

MemPro 12 000 DD - 20 000 DD-SS

REVERSE OSMOSIS SS SERIES MEMPRO STAINLESS STEEL

MemPro 4000 D - 10 000 D-SS

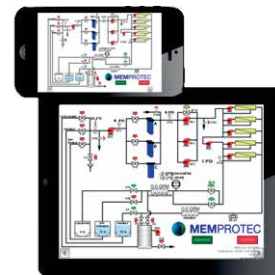
REVERSE OSMOSIS SS SERIES MEMPRO STAINLESS

- Superior quality & performance
- Unimodular design
- Positive recirculation on membrane elements
- Stainless steel double ladder frame & plumbing
- Stainless steel pumps with Industrial motors (top mounted)
- Stainless steel integrated CIP tank
- Ventilated stainless steel electrical box
- Permeate & concentrate valve panel
- Option of expansion up to 20 elements & 5 high pressure pumps
- Programmable logic controller
- Conductivity meter & digital temperature monitor
- Low pressure & high temperature safety
- 2 independant banks of 7 X 20 inch filters in SS
- Strainer included
- 5 years limited warranty



Options

- + Wash water management with pH meter
- + Drainage by air «Mempro Flush» patent # US 8,889,001 B2
- + Individual vessel permeate flowmeters
- + HMI with web access
- + Interstages booster pump with VFD
- + High-pressure housing 600 PSI vs 500 PSI
- + Acid pump
- + Inline brix monitor
- + SS plumbing
- + SS soap filter
- + Complete automation
- + 230V - 460V - 600V - 3 phases



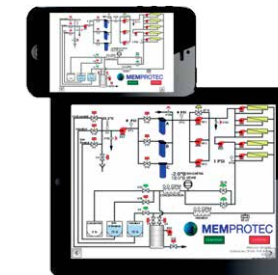
Optional
Remotely controlled
via web access

- Superior quality & performance
- Unimodular design
- Positive recirculation on membrane elements
- Stainless steel construction frame & plumbing
- Stainless steel pumps with industrial motors (top mounted)
- Stainless steel integrated CIP tank
- Ventilated stainless steel electrical box
- Permeate & concentrate valve panel
- Option of expansion up to 20 elements & 5 high pressure pumps
- Conductivity meter & digital temperature monitor
- Low pressure & high temperature safety
- 2 independant banks of 3 X 20 inch filters
- Strainer included
- 5 years limited warranty



Options

- + Drainage by air «Mempro Flush» patent # US 8,889,001 B2
- + Individual vessel permeate flowmeters
- + HMI with web access
- + Interstages booster pump with VFD
- + High-pressure housing 600 PSI vs 500 PSI
- + Acid pump
- + Inline brix monitor
- + SS plumbing
- + Soap filter
- + Complete automation
- + 230V - 460V - 600V - 3 phases
- + 1 independant bank of 7 X 20 inch filters in SS



Optional
Remotely controlled
via web access

| Model | Membrane Quantity | Prefilter 5 microns | Feed pump | Pressure pump | Recirculation pump | Amps. 240 volts | Dimensions (WxDxH) |
|----------------------|-------------------|---------------------|-----------|---------------|--------------------|-----------------|--------------------|
| MemPro 12 000 DD-SS | 12 x 8" | 2 x 7 x 20" | 7,5 hp | 3 x 7,5 hp | 6 x 3 hp | 203 | 112" x 53" x 75" |
| MemPro 14 000 DD-SS | 14 x 8" | 2 x 7 x 20" | 7,5 hp | 3 x 7,5 hp | 7 x 3 hp | 216 | 112" x 53" x 75" |
| MemPro 16 000 DD-SS | 16 x 8" | 2 x 7 x 20" | 7,5 hp | 3 x 7,5 hp | 8 x 3 hp | 229 | 112" x 53" x 75" |
| MemPro 18 000 DD-SS | 18 x 8" | 2 x 7 x 20" | 7,5 hp | 4 x 7,5 hp | 9 x 3 hp | 278 | 112" x 53" x 75" |
| MemPro 20 000 DD-SS* | 20 x 8" | 2 x 7 x 20" | 7,5 hp | 4 x 7,5 hp | 10 x 3 hp | 291 | 112" x 53" x 96" |

*Model identified in the picture

| Model | Membrane Quantity | Prefilter 5 microns | Feed pump | Pressure pump | Recirculation pump | Amps. 240 volts | Dimensions (WxDxH) |
|--------------------|-------------------|---------------------|-----------|---------------|--------------------|-----------------|--------------------|
| MemPro 4000 D-SS | 4 x 8" | 6 x 20" | 1 x 3 hp | 2 x 5 hp | 2 x 3 hp | 82 | 109" x 36" x 76" |
| MemPro 6000 D-SS | 6 x 8" | 6 x 20" | 1 x 3 hp | 3 x 5 hp | 3 x 3 hp | 114 | 109" x 36" x 76" |
| MemPro 8000 D-SS* | 8 x 8" | 6 x 20" | 1 x 5 hp | 2 x 7,5 hp | 4 x 3 hp | 139 | 109" x 38½" x 76" |
| MemPro 10 000 D-SS | 10 x 8" | 6 x 20" | 1 x 5 hp | 2 x 7,5 hp | 5 x 3 hp | 157 | 109" x 38½" x 96" |

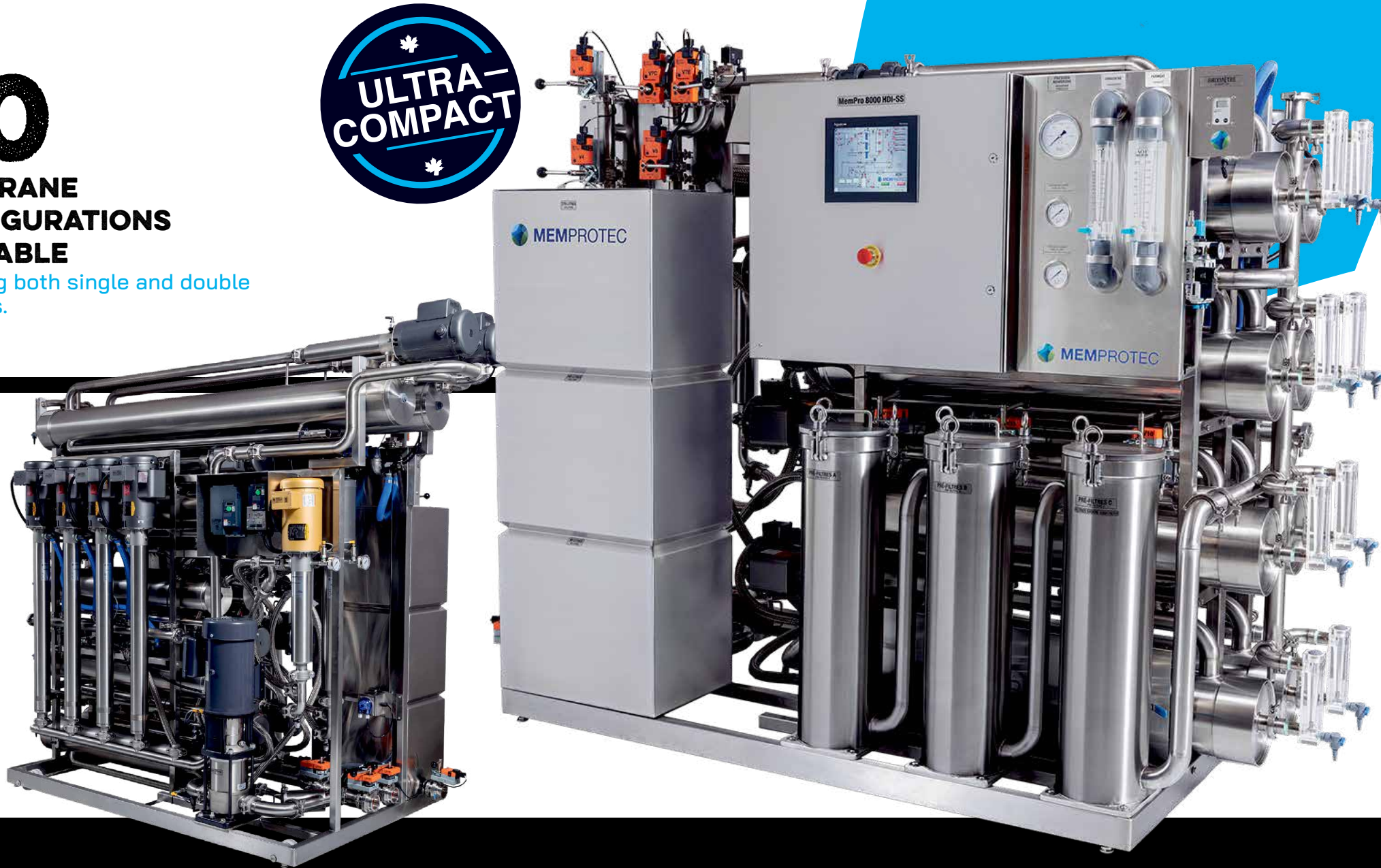
*Model identified in the picture

NEW REVERSE OSMOSIS CONFIGURATION

More than **50**
MEMBRANE
CONFIGURATIONS
AVAILABLE

Featuring both single and double
RO posts.

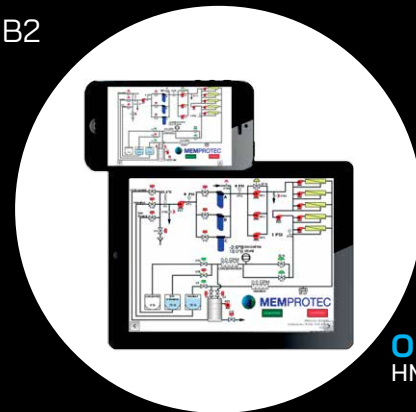
ULTRA-
COMPACT



- Superior quality & performance
- Unimodular design
- Positive recirculation on membrane elements
- Stainless steel construction frame & piping
- Stainless steel pump with industrial motor (mounted above the pump)
- Stainless steel integrated CIP tank
- Option of expansion up to 12 elements & 5 high pressure pumps
- Conductivity meter & digital temperature monitor
- Low-pressure & high-temperature safety
- 1 independant bank of 7 X 20 inch filters in SS
- SS strainer included
- 5-years limited warranty

Options

- + Wash water management with pH meter
- + Drainage by air «Mempro Flush» patent # US 8,889,001 B2
- + Individual vessel permeate flowmeters
- + HMI with web access
- + 1 or 2 interstage pumps with VFD
- + 600 PSI high-pressure vessels vs 500 PSI
- + Inline brix monitor
- + SS plumbing
- + SS soap filter
- + Complete automation
- + 230V – 460V – 600V – 3 phases



Optional
HMI with web access

| Model | Membrane Quantity | Pre-filter 5 micron | Feed pump | Pressure pump | Recirculation pump | Amps. 240 volts | Dimensions (WxDxH) |
|---------------------|-------------------|---------------------|-----------|---------------|------------------------|-----------------|--------------------------|
| MemPro 3000 HD-SS | 3 x S | 1 x 7 x 20" | 5 hp | 2 x 5 hp | 3 x 1,5 hp | 80 | 90" x 49-1/2" x 78" |
| MemPro 4000 HD-SS | 4 x S | 1 x 7 x 20" | 5 hp | 2 x 5 hp | 4 x 1,5 hp | 87 | 90" x 49-1/2" x 78" |
| MemPro 5000 HD-SS | 5 x S | 1 x 7 x 20" | 5 hp | 3 x 5 hp | 5 x 1,5 hp | 116 | 90" x 49-1/2" x 78" |
| MemPro 6000 HD-SS | 6 x S | 1 x 7 x 20" | 5 hp | 3 x 5 hp | 6 x 1,5 hp | 123 | 90" x 49-1/2" x 78" |
| MemPro 7000 HD-SS | 7 x S | 1 x 7 x 20" | 5 hp | 3 x 5 hp | 7 x 1,5 hp | 130 | 90" x 49-1/2" x 78" |
| MemPro 8000 HD-SS* | 8 x S | 1 x 7 x 20" | 5 hp | 3 x 5 hp | 8 x 1,5 hp | 137 | 90" x 49-1/2" x 78" |
| MemPro 9000 HD-SS | 9 x S | 1 x 7 x 20" | 5 hp | 2 x 7,5 hp | 9 x 1,5 hp | 147 | 90" x 49-1/2" x 93" |
| MemPro 10 000 HD-SS | 10 x S | 1 x 7 x 20" | 5 hp | 2 x 7,5 hp | 10 x 1,5 hp | 154 | 90" x 49-1/2" x 93" |
| MemPro 12 000 HD-SS | 8 x S et 2 x D | 1 x 7 x 20" | 5 hp | 2 x 7,5 hp | 8 x 1,5 hp et 2 x 3 hp | 163 | 108-1/2" x 49-1/2" x 93" |

S = single Post | D = double Post

*Model identified in the picture 11

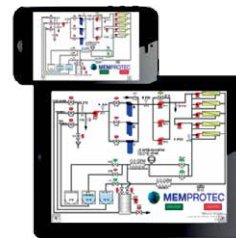
MemPro 1000 H - 6000 H-SS

- Superior quality & performance
- Modular conception
- Positive recirculation on membrane elements
- Stainless steel construction frame & plumbing
- Stainless steel pumps with industrial motors (top mounted)
- Gould stainless steel feed pump
- Stainless steel modular CIP tank
- Ventilated stainless steel electrical box
- Permeate & concentrate valve panel
- Option of expansion up to 8 elements & 4 high pressure pumps
- Conductivity meter & digital temperature monitor
- Low pressure & high temperature safety
- 2 independant banks of 2 X 20 inch filter housings
- Strainer included
- 5 years limited warranty



Options

- + Wash water management with pH meter
- + Drainage by air «Mempro Flush» patent # US 8,889,001 B2
- + Individual vessel permeate flow meters
- + HMI with web access
- + Interstages booster pumps
- + High-pressure housing 600 PSI vs 500 PSI
- + Acid pump
- + 5 hp Gould stainless steel feed pump
- + Inline brix monitor
- + SS valves
- + 230V - 460V - 600V - 3 phases
- + Complete automation



Optional
Remotely controlled
via web access

REVERSE OSMOSIS SÉRIE MEMPRO-SS EN ACIER INOX

MemPro 1200 V - 2400 V-SS

- Superior quality & performance
- Compact
- Easy & simplified operation
- Positive recirculation on membrane elements
- Stainless steel frame & plumbing
- Mounted on casters
- Stainless steel recirculation pump with industrial motor (top mounted)
- Stainless steel electrical box
- Stainless steel modular CIP tank
- Permeate & concentrate valve panel
- Option of expansion up to 2 elements, 2 high pressure pumps
- Low pressure & high temperature safety protection
- Feed pump & 2 filter housings (20")
- Digital conductivity monitor
- 5 years limited warranty



Options

- + Inlet strainer 1.5"
- + Horizontal element support
- + Remotely controlled via web access
- + Inline brix monitor
- + 230V - 460V - 600V - 3 phases



Optional
Remotely controlled
via web access

REVERSE OSMOSIS SÉRIE MEMPRO-SS EN ACIER INOX

| Model | Membrane Quantity | Prefilter 5 microns | Feed pump | Pressure pump | Recirculation pump | Amps. 240 volts | Dimensions (WxDxH) |
|-------------------|-------------------|---------------------|-----------|---------------|--------------------|-----------------|---------------------------|
| MemPro 1000 H-SS | 1 x 8" | 4 x 20" | 2 hp | 1 x 5 hp | 1 x 1,5 hp | 39 | 69" x 33 1/2" x 73" + 19" |
| MemPro 2000 H-SS | 2 x 8" | 4 x 20" | 2 hp | 1 x 5 hp | 2 x 1,5 hp | 46 | 69" x 33 1/2" x 73" + 19" |
| MemPro 3000 H-SS | 3 x 8" | 4 x 20" | 2 hp | 2 x 5 hp | 3 x 1,5 hp | 75 | 69" x 33 1/2" x 73" + 19" |
| MemPro 4000 H-SS* | 4 x 8" | 4 x 20" | 2 hp | 2 x 5 hp | 4 x 1,5 hp | 82 | 69" x 33 1/2" x 73" + 19" |
| MemPro 5000 H-SS | 5 x 8" | 4 x 20" | 5 hp | 3 x 5 hp | 5 x 1,5 hp | 110 | 69" x 33 1/2" x 92" + 19" |
| MemPro 6000 H-SS | 6 x 8" | 4 x 20" | 5 hp | 3 x 5 hp | 6 x 1,5 hp | 117 | 69" x 43" x 92" + 19" |

*Model identified in the picture

| Model | Membrane Quantity | Prefilter 5 microns | Feed pump | Pressure pump | Recirculation pump | Amps. 240 volts | Dimensions (WxDxH) |
|-------------------|-------------------|---------------------|-----------|---------------|--------------------|-----------------|--------------------|
| MemPro 1200 V-SS* | 2 x 8" | 2 x 8" | 2 hp | 1 x 5 hp | 2 x 1,5 hp | 46 | 80" x 24" x 64" |
| MemPro 1800 V-SS | 3 x 8" | 3 x 8" | 2 hp | 1 x 7,5 hp | 3 x 1,5 hp | 66 | 100" x 24" x 64" |
| MemPro 2400 V-S | 4 x 8" | 4 x 8" | 2 hp | 1 x 7,5 hp | 4 x 1,5 hp | 73 | 120" x 24" x 64" |

*Model identified in the picture

MemPro 450 V - 900 V-SS

REVERSE OSMOSIS SS SERIES MEMPRO STAINLESS STEEL

- Superior quality & performance
- Compact
- Easy & simplified operation
- Positive recirculation on membrane elements
- Stainless steel frame & plumbing
- Mounted on casters
- 2 Stainless steel high pressure pumps with industrial motors (top mounted)
- Stainless steel modular CIP tank
- Stainless steel electrical box
- Permeate & concentrate valve panel
- Option of expansion up to 2 elements
- Low pressure & high temperature safety protection
- Feed pump & 2 filter housings
- Digital conductivity monitor
- 5 years limited warranty

Options

- + Drainage by air «Mempro Flush» patent # US 8,889,001 B2
- + Inlet strainer 1.5 inch
- + Individual vessel flowmeters
- + Wi-Fi remote control
- + Inline brix monitor
- + 230V - 460V - 600V - 3 phases



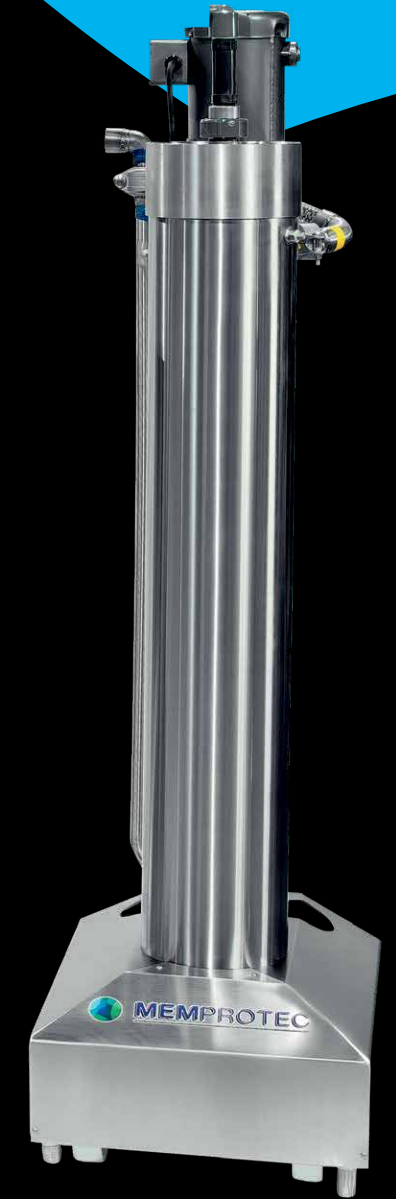
Optional
Remotely controlled
via web access



Expansion Unit

- Superior quality and performance
- Compact
- Easy and quick installation
- Positive recirculation on membrane elements
- Stainless steel frame and plumbing
- Mounted on caster (Only vertical model)
- Stainless steel recirculation pump with industrial motor (Top mounted)
- 1 year limited warranty

REVERSE OSMOSIS SS SERIES MEMPRO STAINLESS STEEL



| Model | Membrane Quantity | Prefilter 5 microns | Feed pump | Pressure pump | Recirculation pump | Amps. 240 volts | Dimensions (WxDxH) |
|------------------|-------------------|---------------------|-----------|---------------|--------------------|-----------------|--------------------|
| MemPro 450 V-SS | 1 x 8" | 1 x 20" | 1,5 hp | 3 hp | 1,5 hp | 27 | 19" x 25" x 64" |
| MemPro 600 V-SS* | 1 x 8" | 1 x 20" | 1,5 hp | 5 hp | 1,5 hp | 35 | 19" x 25" x 64" |
| MemPro 900 V-SS | 2 x 8" | 1 x 20" | 1,5 hp | 5 hp | 2 x 1,5 hp | 42 | 38" x 25" x 64" |

*Model identified in the picture

| Model | Membrane Quantity | Recirculation pump | Amps. 240 volts | Dimensions (WxDxH) |
|----------------------------------|-------------------|--------------------|-----------------|--------------------|
| Unité d'expansion SS Verticale* | 1 x 8" | 1,5 hp | 7 | 18" x 24" x 62" |
| Unité d'expansion SS Horizontale | 1 x 8" | 1,5 hp | 7 | 62" x 9" x 20" |
| Unité d'expansion SS Double | 2 x 8" | 3 hp | 13 | 105" x 10" x 21" |

*Model identified in the picture

MemPro 350 H - 350 HV-SS

REVERSE OSMOSIS SS SERIES MEMPRO STAINLESS STEEL

MemPro 100 - 200 H-SS

REVERSE OSMOSIS SS SERIES MEMPRO STAINLESS STEEL



- Superior quality & performance
- Affordable & compact
- Frost protection - drainable conception
- Horizontal installation on top of sap tank
- Quick and easy setup
- No need of concentrate tank (batch concentration)
- 10 minutes fast & simple installation
- Low electrical power consumption
- Easy & simplified operation
- Positive recirculation on membrane elements
- Stainless steel frame & plumbing
- Mounted on casters
- Stainless Steel recirculation pump
- SS high efficiency pressure pumps
- Low pressure and high temperature safety protection
- 10 inch filter housing
- Strainer included
- 5 years limited warranty
- Patent # CA 2,642,050
- Patent # US 8,025,799

Options

- + GFCI Breaker (must be used when installation above sap tank)
- + Concentrate & permeate valve panel
- + Inlet strainer 1 po



WATCH THE EXPLAINER VIDEO OF THE CONCENTRATOR



Optional Remotely controlled via web access



- Superior quality & performance
- Affordable & compact
- Frost protection - drainable conception
- Horizontal installation on top of sap tank
- Quick and easy setup
- No need of concentrate tank (batch concentration)
- Low electrical power consumption
- Easy & simplified operation
- Positive recirculation on membrane elements
- Stainless steel frame & plumbing
- Mounted on casters
- Stainless Steel recirculation pump
- SS high efficiency pressure pumps
- Low pressure and high temperature safety protection
- 10 inch filter housing
- Strainer included
- 5 years limited warranty
- Patent # CA 2,642,050
- Patent # US 8,025,799

Options

- + GFCI Breaker (must be used when installation above sap tank)
- + Concentrate & permeate valve panel
- + Inlet strainer 1 po



Optional Remotely controlled via web access

| Model | Membrane Quantity | Prefilter 5 microns | Pressure pump | Recirculation pump | Amps. 240 volts | Weight (lbs) | Dimensions (WxDxH) |
|------------------|-------------------|---------------------|---------------|--------------------|-----------------|--------------|--------------------|
| MemPro 350 H-SS | 1 x 8" | 1 x 10" | 1,5 hp | 1,5 hp | 15 | 320 | 64" x 22" x 23" |
| Mempro 350 HV-SS | 1 x 8" | 1 x 10" | 1,5 hp | 1,5 hp | 15 | 295 | 19" x 25" x 64" |

| Model | Membrane Quantity | Prefilter 5 microns | Pressure pump | Recirculation pump | Amps. 120 volts | Weight (lbs) | Dimensions (WxDxH) |
|------------------|-------------------|---------------------|---------------|--------------------|-----------------|--------------|--------------------|
| MemPro 100 H-SS | 1 x 4" | 1 x 10" | 1/2 hp | 1/2 hp | 14 | 150 | 50" x 16" x 21" |
| MemPro 200 H-SS* | 2 x 4" | 1 x 10" | 3/4 hp | 1/2 hp | 18 | 175 | 50" x 16" x 21" |

*Model identified in the picture

MiniPro 100 H-SS

REVERSE OSMOSIS SS SERIES MINIPRO STAINLESS STEEL

MemPro pH Control



- For maple bush of 200 to 500 taps
- Superior quality & performance
- Affordable & compact
- Low pressure protection
- Frost protection - drainable conception
- Horizontal installation on top of sap tank or vertical installation
- Fast & simple installation
- No need of concentrate tank (batch concentration)
- Low electrical power consumption
- Easy & simplified operation
- Stainless steel frame & plumbing
- Mounted on casters
- SS high efficiency pressure pumps
- 10 inch filter housing
- Strainer included
- 5 years limited warranty
- Patent # CA 2,642,050
- Patent # US 8,025,799



Possibility of transforming vertically

Options

- + Flowmeters panel
- + 120 volt GFCI breaker
- + Transform vertically



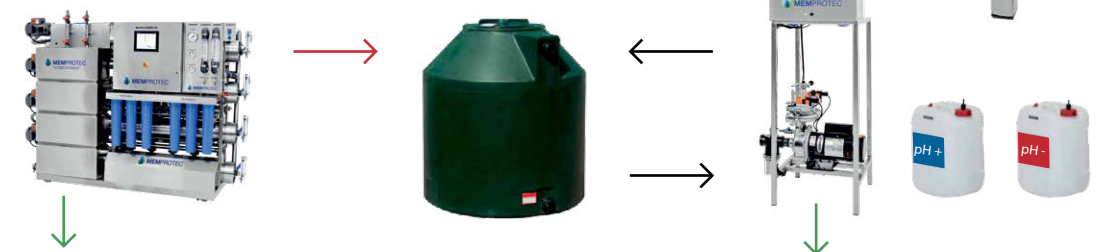
SMART PH NEUTRALIZER

- Neutralize the pH of your washing water from your RO with our MemPro pH Control system in a simple and completely automated way.
- Whether your water is acidic or basic, our system will inject acid or a base as needed to neutralize the solution and thus safely reject it in the environment.
- You will be able to do and monitor the neutralization process remotely using the touch screen of the MemPro pH Control system with wifi.
- 2 models are available : the smart model and the automatic model.
- Greatly reduce the amount of wash water to be neutralized with the Memproflush technology.
- Compatible with MEMPROTEC RO's and all brands of RO'S.



| Model | Membrane Quantity | Prefilter 5 microns | Pressure pump | Amps. 120 volts | Weight (lbs) | Dimensions (WxDxH) |
|------------------|-------------------|---------------------|---------------|-----------------|--------------|--------------------|
| MiniPro 100 H-SS | 1 x 4" | 1 x 10" | 3/4 hp | 10,4 | 88,5 | 50" x 16" x 21" |

Inform yourself !





Delta Pro 2400 - 14 400

- Frame: Stainless Steel
- Control box certified NEMA
- Stainless steel plumbing 304
- Solenoid valve 304 SS
- Electronic controller with indicator light for full tank, low pressure monitoring at feed pump, pre-treatment, rinse and start-up interlock.
- Sediment pre-filter BB - 20" 5 micron
- Automatic rinsing with programmable supply water
- 1 year limited warranty



| Model | Membrane Quantity | Gallons / day | Pressure pump | Amps. 240 volts | Dimensions (WxDxH) |
|------------------|-------------------|---------------|---------------|-----------------|--------------------|
| Delta Pro 2400 | 1 x 4" | 2400 | 1 hp | 6,8 | 24" x 16" x 55" |
| Delta Pro 4800* | 2 x 4" | 4800 | 1 hp | 6,8 | 24" x 16" x 55" |
| Delta Pro 7200 | 3 x 4" | 7200 | 1,5 hp | 9,2 | 24" x 16" x 55" |
| Delta Pro 9600 | 4 x 4" | 9600 | 1,5 hp | 9,2 | 24" x 16" x 55" |
| Delta Pro 12 000 | 5 x 4" | 12 000 | 2 hp | 9,8 | 24" x 16" x 55" |
| Delta Pro 14 400 | 6 x 4' | 14 000 | 2 hp | 9,8 | 24" x 16" x 55" |

*Model identified in the picture

Measuring tools

Digital Clamp Meter 8344707
Digital refractometer 694076



Inline refractometer

0-33 3603
0-80 3604 (for syrup)



3603

3604

Valve panel

1/2" 501525
3/4" 501526
1" 501527
1-1/4" 501530



BARINOX Stainless Steel Drums

25 gl 3805100
34 gl 3805101
40 gl 3805104
Barrel cap 3805102



Strainer

1" 398505
1 1/2" 39957
2" 398504
3" 398507



SS strainer pre-filter

2 1/2" 398518
3" 398508



20" Filter Housing

Big blue 399931
10" 38019
20" 38009



Electrical components

GFCI 240 volts 20 amp (MemPro 350) 2021605
120V Dual Wall GFCI outlet 200406



Membrane storage Vessel

8" 899255



Membrane tools

Membrane puller 8" 693862
Membrane puller 8 1/2" 69386
Membrane pusher 8 1/2" 693863



Memproflush regulator



399575M

SS Filter

SS filter with
7 x 20" cartridges
501910



Monitoring and maintenance of your membranes every day of the sugar season is essential to maintain optimal concentration performance throughout the season and to preserve your membranes in the long run. MEMPROTEC offers you a complete range of high performance maintenance products for your RO.



Cleaners for membranes

Bio-Clean B cleaner

Membrane cleaner for Mempro 8040 LFT-HE, Filmtec, Mempro NF-70, H2O, Hydranautics

A 4 L 380015 **B** 20 L 380016

Bio-Protec PG

Long term storing solution.

C 4 L 37985PP **D** 20 L 37986PP

Bio-Acid

Cleaner for reverse osmosis or nanofiltration membrane.

| | |
|-----------------------|---------------|
| E 2 KG 37995 | LIQUID |
| F 4 KG 379955 | 20 L 380515 |
| G 18 KG 379951 | 205 L 380514 |

Bio-Preserve

Short term preservation.

H 16 oz 379905

OXISAN Cleaner

4 L 38006
20 L 380061



Cleaners for pans

Super Clean Cleaner food grade

4 L 380071
20 L 38007



Esthetic Cleaner for stainless steel accessories

4 L 38050



Cleaners for tubing

Isopropyl Alcohol 70%

20 L 380340
205 L 380342



Membrane 8"

| | |
|-----------------------------|---------|
| Membrane MemPro HC+8040 | 299701 |
| Membrane MemPro 70-400 | 3999915 |
| Membrane MemPro 8040-LFT-HE | 399991 |
| Membrane MemPro SF-70 | 2996996 |

Membrane 4"

| | |
|-----------------------------|---------|
| Membrane MemPro 4040-LFT-HE | 399994 |
| Membrane MemPro SF-40 | 2996997 |



7" x 30" Soap prefilter

380775



Filter cartridge

| | |
|------------------------------------|-------|
| K 9 -7/8" Purtrax 5 microns | 39905 |
| L 20" Purtrax 5 microns | 38002 |

4½ x 20" Soap filter

I Single use 255496

Syrup filter press



12x12

Several sizes available up to 10 filtration plates with hydraulic jack and 12 ton air.

20x20

Several sizes available from 7 to 20 filtration plates with hydraulic jack and 20 ton air.

Accessories included with the presses:

- Drain valve
- Industrial wheels on bearing
- Tilt feature for better emptying
- Drain plug on failure
- Stainless steel jack rod
- Knife to reduce number of plates
- 2 sets of filters for each syrup press
- Pump mounting bracket

Complete filter kit glass bead media



| | |
|-------------------------------|---------|
| Plastic filter 45 gpm | 399954 |
| Plastic filter 75 gpm | 399955 |
| Stainless steel filter 75 gpm | 399957 |
| Glass media 60 lbs | 3807660 |

The glass media filter allows maple sap to be filtered before it enters in the Reverse Osmosis System. This ensures well-filtered sap and helps reduce the amount of Purtrex filter cartridges needed for filtration. It is still important to always use the 5 micron 20" filter cartridges on the Reverse Osmosis System to ensure good filtration.

The filter is available in plastic or stainless steel. The pumps are also available in plastic or stainless steel.

Memprotec glass bead media blend provides superior filtration by retaining particles 3 microns and larger. The filter is easy to backwash in minutes with a single, simple, easy-to-use control valve. On the stainless-steel model, there is a 5" porthole at the top to fill the glass bead media filter as well as a second porthole at the bottom to empty it. It also has a drain valve with strainer for drainage.

PUMP CHOICE
With the purchase of a filter kit.



"T" Adaptor soc

| (soc x soc) | |
|-------------|-----------|
| 1 1/2" | 30J01-150 |
| 2" | 30J01-200 |

| (soc x soc x fnpt) | |
|--------------------|---------------|
| 1 1/2" | 30J02-150 |
| 2" | 30J02-200 |
| 1 1/2" x 1/2" | 30J03-150-050 |
| 1 1/2" x 3/4" | 30J03-150-075 |
| 1 1/2" x 1 1/4" | 30J03-150-125 |
| 2" x 1/2" | 30J03-200-050 |
| 2" x 3/4" | 30J03-200-075 |
| 2" x 1" | 30J03-200-100 |
| 2" x 1 1/4" | 30J03-200-125 |
| 2" x 1 1/2" | 30J03-200-150 |

| (fnpt x fnpt) | |
|---------------|-----------|
| 1/2" | 30J04-050 |
| 3/4" | 30J04-075 |
| 1" | 30J04-100 |
| 1 1/4" | 30J04-125 |
| 1 1/2" | 30J04-150 |
| 2" | 30J04-200 |



"Y" Adapter soc

| (soc x soc) | |
|-------------|-----------|
| 1 1/2" | 30J39-150 |
| 2" | 30J39-200 |



90° Elbow

| (soc x soc) | |
|-------------|-----------|
| 1 1/2" | 30J05-150 |
| 2" | 30J05-200 |

| (soc x fnpt) | |
|------------------------|---------------|
| 1 1/2" | 30J07-150 |
| 2" | 30J07-200 |
| Réduit-1 1/2" x 1 1/4" | 30J08-150-125 |
| Réduit-2" x 1 1/4" | 30J08-200-125 |
| Réduit-2" x 1 1/2" | 30J08-200-150 |

| (fnpt x fnpt) | |
|---------------|-----------|
| 1/2" | 30J09-050 |
| 3/4" | 30J09-075 |
| 1" | 30J09-100 |
| 1 1/4" | 30J09-125 |
| 1 1/2" | 30J09-150 |
| 2" | 30J09-200 |

| (spig x soc) | |
|--------------|-----------|
| 1 1/2" | 30J10-150 |
| 2" | 30J10-200 |

| (soc x mnpt) | |
|--------------|-----------|
| 1 1/2" | 30J11-150 |
| 2" | 30J11-200 |

| (spig x fnpt) | |
|---------------|-----------|
| 1 1/2" | 30J12-150 |

| (mnpt x fnpt) | |
|---------------|-----------|
| 1 1/2" | 30J14-150 |
| 2" | 30J14-200 |



Cross soc

| (soc x soc) | |
|-------------|-----------|
| 1 1/2" | 30J19-150 |
| 2" | 30J19-200 |



Union soc dismountable buna-n O'ring

| (soc x soc) | |
|-------------|-----------|
| 1 1/2" | 30J34-150 |
| 2" | 30J34-200 |



45° Elbow

| (soc x soc) | |
|-------------|-----------|
| 1 1/2" | 30J17-150 |
| 2" | 30J17-200 |



Cap soc

| (soc x soc) | |
|-------------|-----------|
| 1 1/2" | 30J30-150 |
| 2" | 30J30-200 |

Camlock adapters

POLYPROPYLENE

All adapters are available in stainless steel



Part A

| | |
|--------|--------|
| 3/4" | 69558 |
| 1" | 69679 |
| 1 1/4" | 696794 |
| 1 1/2" | 696796 |
| 2" | 696797 |



Part B

| | |
|--------|--------|
| 3/4" | 69674 |
| 1" | 69551 |
| 1 1/4" | 69562 |
| 1 1/2" | 695515 |
| 2" | 695516 |



Part C

| | |
|--------|--------|
| 3/4" | 69557 |
| 1" | 69677 |
| 1 1/4" | 69422 |
| 1 1/2" | 694224 |
| 2" | 695571 |



Part D

| | |
|--------|--------|
| 3/4" | 69561 |
| 1" | 69678 |
| 1 1/4" | 696784 |
| 1 1/2" | 695621 |
| 2" | 69563 |



Part E

| | |
|--------|---------|
| 3/4" | 69556 |
| 1" | 69676 |
| 1 1/4" | 696765 |
| 1 1/2" | 696764 |
| 2" | 6967645 |



Part F

| | |
|--------|---------|
| 3/4" | 69675 |
| 1" | 69680 |
| 1 1/4" | 695586 |
| 1 1/2" | 696763 |
| 2" | 6967635 |



Part DP

| | |
|--------|--------|
| 3/4" | 695632 |
| 1" | 695633 |
| 1 1/4" | 695634 |
| 1 1/2" | 695635 |
| 2" | 695636 |



Part DC

| | |
|--------|--------|
| 3/4" | 695585 |
| 1" | 695589 |
| 1 1/4" | 695590 |
| 1 1/2" | 695591 |
| 2" | 695592 |

Quick clamp fittings | Stainless steel



Female Threaded Fitting

| | | |
|--------|----------------|----------|
| 1" | Bride 1-1 1/2" | 9998221 |
| 1 1/2" | Bride 1-1 1/2" | 9998227 |
| 2" | Bride 1 1/2" | 9998222 |
| 2" | Bride 2" | 9998226 |
| 2 1/2" | Bride 2 1/2" | 9998223 |
| 3" | Bride 3" | 99982245 |



Male Threaded Fitting

| | | |
|--------|--------------|---------|
| 1" | Bride 1-1/2" | 9998230 |
| 1 1/2" | Bride 1-1/2" | 9998231 |
| 1 1/2" | Bride 2" | 9998232 |
| 2" | Bride 2 1/2" | 9998233 |



Clamp HD

| | |
|----------------|---------|
| Bride 1-1 1/2" | 9998206 |
| Bride 2" | 9998210 |
| Bride 2 1/2" | 9998214 |
| Bride 3" | 9998218 |



Insert Fitting

| | | |
|--------|--------------|---------|
| 1" | Bride 1" | 9998251 |
| 1 1/2" | Bride 1 1/2" | 9998252 |
| 2" | Bride 2" | 9998253 |
| | Bride 2 1/2" | 9998254 |
| 3" | Bride 3" | 9998220 |



Gasket

| | |
|--------------|---------|
| Bride 1 1/2" | 9998207 |
| Bride 2" | 9998203 |
| Bride 2 1/2" | 9998211 |
| Bride 3" | 9998219 |



Cap

| | |
|----------------|---------|
| Bride 1-1 1/2" | 9998252 |
| Bride 2" | 9998225 |
| Bride 2 1/2" | 9998255 |
| Bride 3" | SFCCP34 |

Connecting systemt

Valves



Ball Valve

| | |
|------------|---------|
| (threaded) | |
| 1/2" | 9999501 |
| 3/4" | 9999502 |
| 1" | 9999503 |
| 1 1/4" | 9999504 |
| 1 1/2" | 9999505 |
| 2" | 9999506 |
| 3" | 9999507 |



Ball union Valve PVC

| | |
|--------|---------|
| 1 1/2" | 9997141 |
| 2" | 9997142 |



Ball Valve SS

| | |
|---------------|--------|
| (fnpt x fnpt) | |
| 1/4" | 699736 |
| 1/2" | 699737 |
| 3/4" | 699725 |
| 1" | 695867 |
| 1 1/4" | 695865 |
| 1 1/2" | 695866 |
| 2" | 695868 |



Butterfly Valve SS with pull handle

| | |
|-----------------|---------|
| with viton seal | |
| 1 1/2" | 9998201 |
| 2" | 9998209 |
| 3" | 9998217 |



Orange Teflon tape

| | |
|-------------|-------|
| 1/2" X 540" | 59897 |
|-------------|-------|



Silicone

| | |
|------|-------|
| 113g | 69907 |
|------|-------|



Paste Teflon

| | |
|--------|--------|
| 250 ml | 598935 |
|--------|--------|



Flexible Vacuum Hose Food Grade

| | |
|--------|--------|
| 699325 | 1" |
| 699326 | 1 1/4" |
| 699327 | 1 1/2" |
| 699328 | 2" |
| 699329 | 3" |



Braided PVC Clear Hose

| | |
|--------|------------------|
| 69932 | 3/4" - 150 PSI |
| 69824 | 1" - 125 PSI |
| 69602 | 1 1/4" - 100 PSI |
| 696029 | 1 1/2" - 100 PSI |
| 696031 | 2" - 75 PSI |



Vinyl Clear Hose

| | |
|---------|----------------------------|
| 69939 | 3/4" X 1/8" MUR - 35 PSI |
| 6993955 | 1" X 1/8" MUR - 25 PSI |
| 6993956 | 1 1/4" X 1/8" MUR - 20 PSI |
| 6993959 | 1 1/2" X 1/4" MUR - 35 PSI |



Rubber Coupling

| | |
|--------|----------------------------------------|
| 598941 | with collars - 1 1/4" |
| 59894 | with collars - 1 1/2" |
| 598942 | with collars - 2" |
| 598943 | with collars - 3" |
| 59896 | reducer with collars - 1 1/2" x 1 1/4" |
| 598945 | reducer with collars - 2" x 1 1/2" |



High gloss blue reinforced PVC Hose

| | |
|--------|------------|
| 1/2" | 128-696006 |
| 3/4" | 128-696007 |
| 1" | 128-696010 |
| 1 1/4" | 128-696012 |
| 1 1/2" | 128-696015 |

SPOUTS

5/16" SERIE

! SOON AVAILABLE IN 3/16"
ASK YOUR DISTRIBUTOR!



PERMANENT SPOUT
● orange

302 942-O

302 944



PERMANENT SPOUT
● green

302 704-V

302 943



PERMANENT SPOUT
● light blue

302 704-B

302 912



PERMANENT SPOUT
● light blue

302 910

302 913



PERMANENT SPOUT
● black

302 704

302 911

302 911-316



PERMANENT SPOUT
○ white

302 909

302 914

SEASONAL

AVAILABLE :

- blue
- green
- orange
- clear
- smoked gray



CLEAR SPOUT REDUCER
7/16" A 5/16"
302 702-PC



CLEAR SPOUT REDUCER
1/4"
302 908



CLEAR SPOUT REDUCER
1/4"
302 907



CLEAR SPOUT REDUCER
5/16"
302 703-PC



SPOUT REDUCER MALE
7/16" TO 5/16"
● black only
302 702



ORANGE SPOUT SEASONAL
19/64"
● orange
302 704-O



WHITE SPOUT SEASONAL
19/64"
○ white
302 704-BC

SADDLE

- FIX HEAD
- STAINLESS STEEL COLLAR



CONNECTORS

3/16" SERIE



TEE LONG CUP
302 928
● black



TEE SHORT CUP
302 926
● black



TEE LONG CUP/PIN
302 930
● black



TEE MALE PIN
302 932
● black



SINGLE SADDLE MANIFOLD W/SCREW SWIVEL HEAD 3/16"
302 820 - 3/4"
302 821 - 1"
302 822 - 1 1/4"
● black



ELBOW
302 939
● black



END LONG T LONG CUP OBSTRUCTED
302 929
● red



END LINE T / PIN OBSTRUCTED
302 927
● red



END LINE T LONG CUP/PIN OBSTRUCTED
302 931
● red



END LINE T/PIN OBSTRUCTED
302 933
● red



TEE REGULAR
302 938
● black



ELBOW 5/16" - 3/16"
302 925
● black



END HOOK T LONG CUP/PIN
302 934
● black



END HOOK T SHORT CUP/PIN
302 936
● black



END HOOK T LONG CUP
302 935
● black



END HOOK T SHORT CUP
302 937
● black



END LINE HOOK
302 940
● black



CONNECTOR W/HOOK
302 941
● black

CONNECTOR

SÉRIE 5/16"



ASK FOR
O'Ring

ACCESSORIES



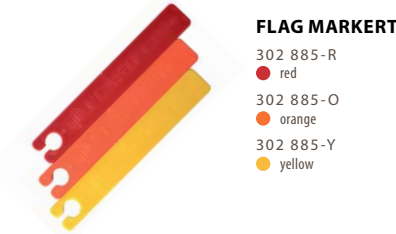
TEE LONG CUP
302915
● black



**END LINE T LONG CUP
OBSTRUCTED**
302916
● red



**END HOOK T
LONG CUP/PIN**
302 919
● black



FLAG MARKERT
302 885-R
● red
302 885-O
● orange
302 885-Y
● yellow



**SINGLE SADDLE
MANIFOLD W/SCREW
SWIVEL HEAD**
3/16" OR 5/16"
302 820 - 3/4"
302 821 - 1"
302 822 - 1 1/4"
● black



**DOUBLE SADDLE MANIFOLD W/
SCREW SWIVEL HEAD 5/16"**
302 830 - 3/4"
302 831 - 1"
302 832 - 1 1/4"
● black



TEE FEMELLE CUP
302 715
● black



**END LINE T SHORT CUP
OBSTRUCTED**
302 717
● red



**END HOOK T
SHORT CUP/PIN**
302 921
● black



COLLAR
302825 - 3/4"
302826 - 1"
302827 - 1 1/4"
● black



**VACUUM TESTER
ADAPTER**
Test de vide sur les chalumeaux et
raccords et sur les conduites principale.
302 884



**SINGLE SADDLE MANIFOLD
1" WITH COLLAR - FIXED
HEAD**
302 887
● black



TEE LONG CUP/PIN
302917
● black



**END LINE T LONG
CUP/PIN OBSTRUCTED**
302 918
● red



**END HOOK T
LONG CUP**
302 920
● black



**SADDLE MAINFOLD
UNIVERSAL-FIXED
HEADFIXE**
302 905
● black



FORK 5/16"
302 724
● black



END LINE VALVE
302 741 - 1"
302 741 - 3/4"



TEE MALE PIN
302 714
● black



**END LINE T/PIN
OBSTRUCTED**
302 716
● red



**END HOOK T
SHORT CUP**
302 922
● black



**SADDLE MANIFOLD
RUBBER 5/16"**
302 829
● black



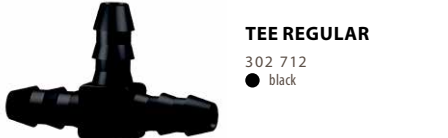
**STRANGLER
W / LOOP / RING 5/16"**
302 730
● black



**STRANGLER
W/HOOK 5/16"**
302 731
● black



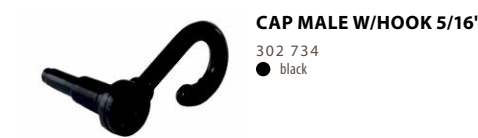
TEE 5/16" - 3/16"
302 924
● black



TEE REGULAR
302 712
● black



END LINE HOOK
302 923
● black



CAP MALE W/HOOK 5/16"
302 734
● black



**CAP FEMALE - END
CAP 5/16"**
302 736
● black



FLASK CLEAR AND CAP
302 901



ELBOW
302 722
● black



**CONNECTOR
W/HOOK**
302 722
● black



**END LINE
LOOP/RING**
302 728
● black



CONNECTOR
302 710
● black



**STAR 3-WAYS
5/16"**
302 753
● black

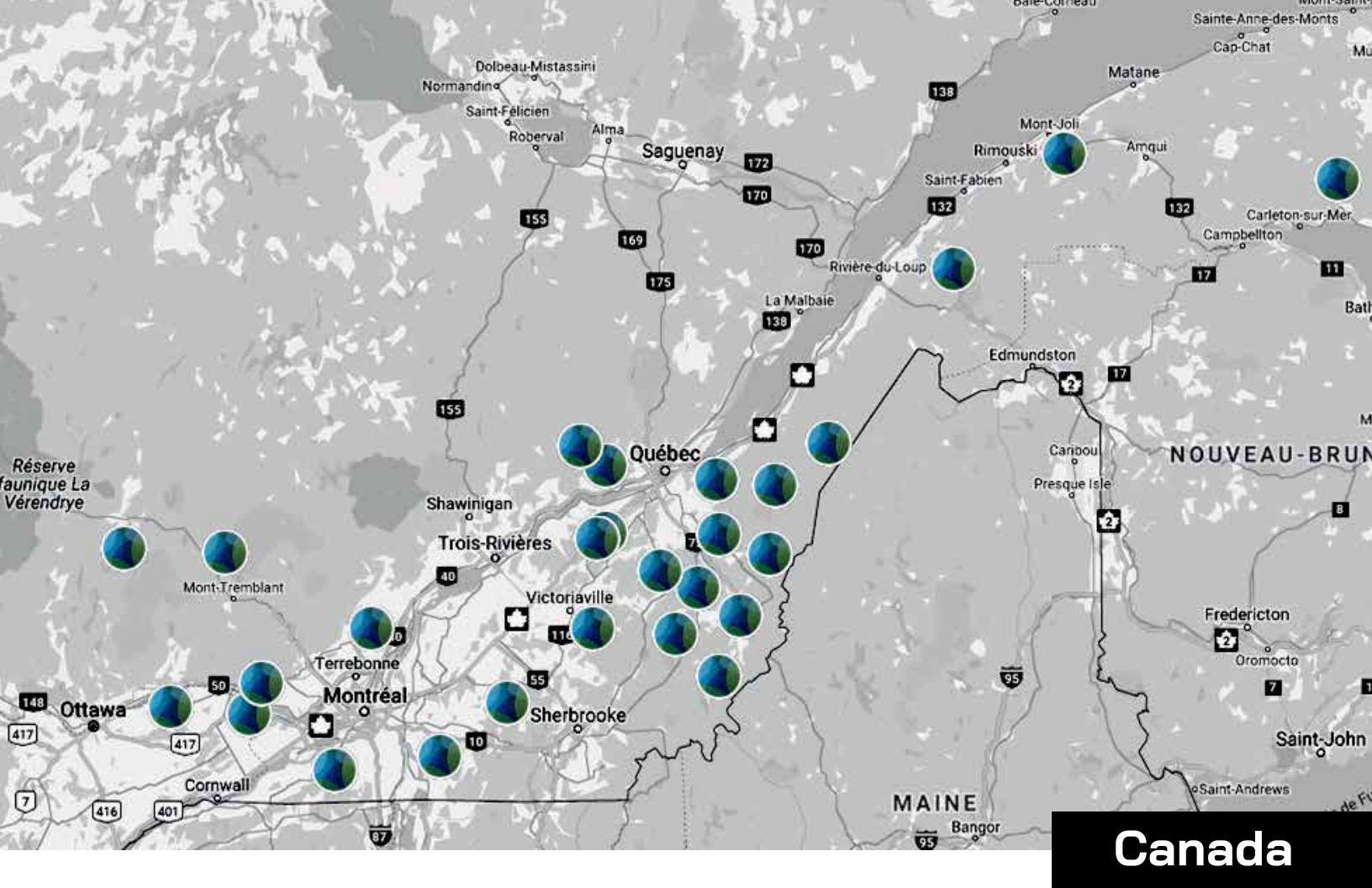


**STAR 6-WAYS
5/16"**
302 756
● black

PERFECT FOR
SPOUTS SANITATION

Our distributors | USA

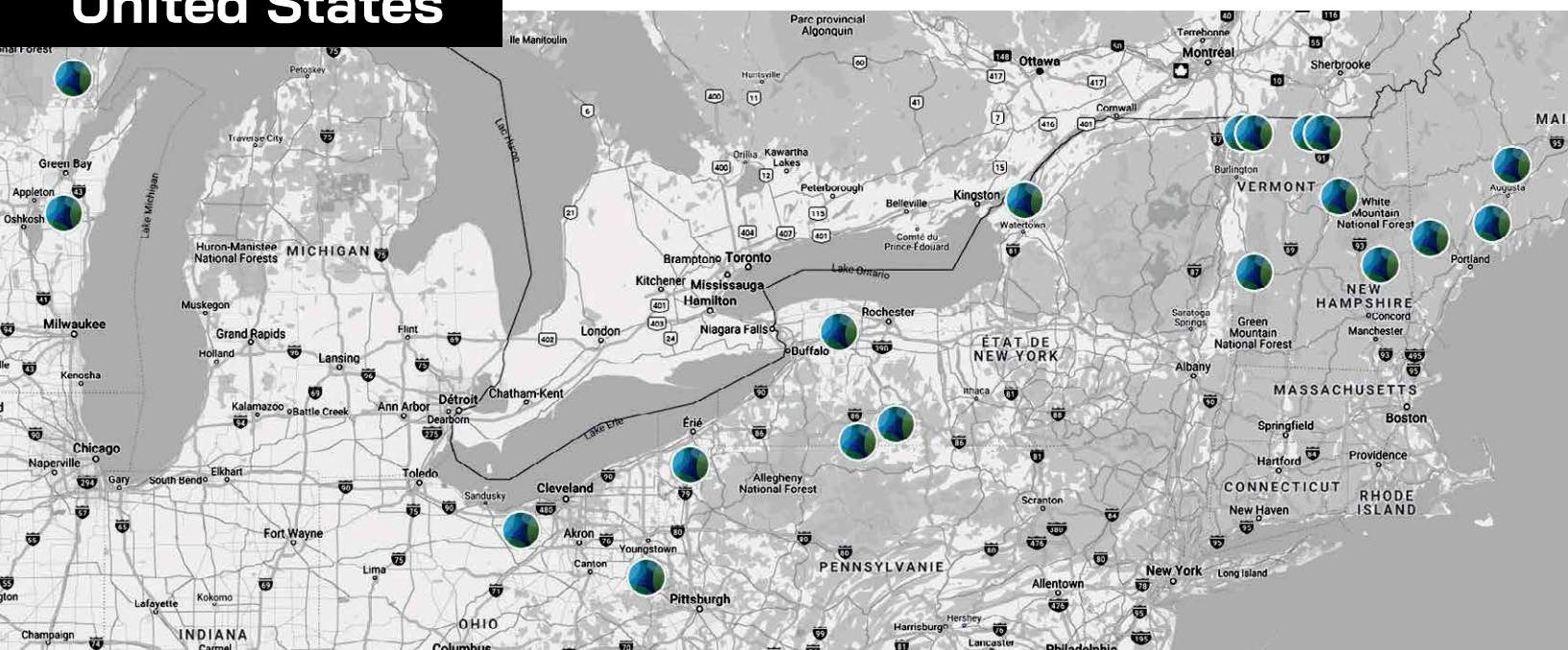
326 Bluff Road Newport, VT 05855
Tél : 844-382-2244 | info@memprotec.com



Canada

Find the nearest
MEMPROTEC distributor !

United States



Maine

WF Mason Evaporators

90 Chapel Street
Porter, ME 04068

Contact : Bill Mason
Tel. : 207-625-8089
wfmasonevaporator@gmail.com

Massachusetts

Winston's Sugar House

8 Greenfield St.
Greenfield, MA 01301

Contact : Hunter
Tel. : 413-522-5090
winstonssugarhouse@gmail.com

Michigan

Chris Tebo

W 3196 Number 31, 5 road
Carney, MI 49812

Contact : Chris Tebo
Tel. : 906-280-3292
tebochris1@gmail.com

New Hampshire

Tyler Johns

8, Depot Street North
Woodstock, NH 03262

Tel. : 603-348-6007
mountain.maples_1@yahoo.com

Windswept Maples Farm

845, Loudon Ridge Road
Loudon, NH 03307

Contact : Jeff Moore
Tel. : 603-267-8492
jeff@windsweptmaples.com

New York

Doug Beitz

1084, Creek Rd,
Attica, NY 14011

Contact : Doug Beitz
Tel. : 585-813-6623
dougbeitz@yahoo.com

Dutch Hill Maple LLC

1275 Woodmancy Road,
Tully, NY 13159

Contact : Nathan Tully
Tel. : 315-657-8116
dutchhillmaple@gmail.com

Maple Chase Farm

16695 Sandy Creek Valley Road
Watertown, NY 13601

Contact : Leroy Burnham
Tel. : 315-767-2845
maplechasefarm@yahoo.com

Mullets Maple Supply

598 Snow Road
Whitesville, NY 14897

Contact : Joe Mullet
Tel. : 814-367-7706 or 607-356-3257

Hoover Maple Supply

2355 Pulteney Road
Branchport, NY 14418

Contact : Mahlon Hoover
Tel. : 607-522-4340

Schweigarts Maple Equipment

804 County Route 103
Woodhull, NY 14898

Contact : George Schweigarts
Tel. : 302-236-8621
gshweigart08@gmail.com

Ohio

Stumpwater Farm LLC

29499 Clark Road
Sullivan, Ohio 44880

Contact : Al & Jared Baxter
Tel. : 419-736-3576
stumpwater@outlook.com

VanPelt's Maple Product LLC

3380 West Garfield Road
Columbiana, Ohio, 44408

Contact : Franklin J VanPelt
Tel. : 330-314-2422
fjv8@icloud.com

Pennsylvania

DL Sheets Maple Products

14942 Dickson Road
Meadville, PA 16335

Contact : Daryl L. Sheets
Tel. : 814-337-0103
sheetstool@zoominternet.net

Vermont

Maple Mountain Sugar House

1153 Delano Road
Albany, VT 05820

Contact : Lyman Gilman

Tel. : 802-755-6268
lymangilman@gmail.com

Jed's Maple

259 Derby Pond Road
Derby, VT 05829

Contact : Stephen Wheeler
Tel. : 802-766-2700
wheeler@jedsmple.com

Wisconsin

Midwest Maple Supply

N2611 Rinehart Dr,
Athens, WI, 54411

Contact : Whitney Rinehart
Tel. : 715-560-2222

Wagner Sugar Hill

W6756 Aspen Lane
Crivitz, WIS 54114

Contact : Charles & Ross Wagner
Tel. : 715-927-4022
wagnerssugarhill@hotmail.com

Smoky Lake Maple Products

208 N 12th St
Hilbert, WIS 54129

Contact : Jim & Angela Schumacher
Tel. : 920-202-4500
jim@smokylakemaple.com



Bas-Saint-Laurent

Ferme Couturval

580, rang Couturval
Amqui, Qc, G5J 1X2

Contact : Pierre Couture
Cell. : 418 631-9358
couturval@gmail.com

Les Équipements SM 2000 inc.

39, Route 132 O
Trois-Pistoles, Qc, GOL 4K0

Contact : Christian Ouellet
Tel. : 418 851-2555
lesequipementssm2000@hotmail.com

Olivier Chamberland

(LS Bilodeau)
811A, 7^e rue Ouest
Ville-Dégelis, Qc, G5T 1Z3

Tel. : 418 484-2013 #1008
olivierbrian1@hotmail.com

Capitale-Nationale

LS Bilodeau (Division Qc)

1025 2^e rang
Neuville, Qc G0A 2R0

Tel. : 418 876-0006
qcproduction@lsbilodeau.com

Centre-du-Québec

Les équipements d'érablières Stars

437 avenue Normand
Laurierville, Qc G0S 1P0

Contact : Christian Gagnon
Tel. : 819 362-5549
lesequipementserablieresstars@outlook.com

Chaudière-Appalaches

Équipements DG Marcoux

930 avenue Principale
Saint-Elzéar, Qc, G0S 2J0

Contact : Réjean Marcoux
Tel. : 418 387-7848
equipementdg@outlook.com

Francis Gauthier

181 Rang 8
Saint-Adalbert, Qc, G0R 2M0

Tel. : 418 356-2344
Cell. : 418 356-6587
limousinedantan@hotmail.com

Installation et équipements d'érablière KL

13 rue de la Chute
Beaumont, QC G0R 1C0

Contact : Kaven Lavallée
Cell : 418-625-0053
info@iekinc.com

L.S. Bilodeau

281 route 108 Est
St-Éphrem-de-Beauce, Qc, G0M 1R0

Tel. : 418 484-2013
Sans frais : 1-888-557-4767
info@lsbilodeau.com

Patrick Nadeau

16 route de la Station
St-Euphémie, QC G0R 2Z0

Tel. : 581 745-5433
pnadeauls@hotmail.com

Produit de l'érable St-Ferdinand B

185 Rte 165
Irlande, Qc, G6H 2N7

Contact : Bruno Boutin
Tel. : 418 428-9381
info@produitdelerable.com

Estrie

BHR Experts

Contact : Maxime Hallé
70 Chemin Lachance
Audet, Qc, G0Y 1A0

Tel. : 819 583-5330
Fax : 819 583-1350
info@bhrexperts.com

Ferme Les Perron

750 Route 108
Bury Qc, J0B 1J0

Contacts :
Alexandre Blais : 819 347-4297
Yves Fauteux : 819 347-5623
Tel. : 819 872-3760
Fax : 819 872-1190
lesperron@xittel.ca

Martin Trudeau Services Acéricoles

911, rue Dufferin
Granby, Qc, J2H 0T7

Contact : Martin Trudeau
Magasin : 579-365-9273
Cell : 438-377-9273
info@servicesacericoles.ca
www.servicesacericoles.ca

Lanaudière

Érablière CG

878 route 349
Saint-Didace, QC J0K 2G0

Contact: Alexis Clavet
Tel : 418 484-2013 #1029
aclavetlsbilodeau@gmail.com

Les Érablières des Monts

200, 5^e Rang Est
Saint-Ambroise-de-Kildare, Qc, J0K 1C0

Contact: Martin Pilette
Tel : 450 803-1488
martin.pilette@gmail.com

Laurentides

Érablière Jacques Caron

14 Chemin de la Sucrierie,
Val des Lacs, QC J0T 2P0

Contact : Jacques Caron
Tel. : 418 837-0440
jacroma1@gmail.com

Yohann Touchette

50 chemin Émard
Kiamika QC J0W 1G0

Cell : 514-424-2752
touchetteyohann@gmail.com

Montérégie

Martin Trudeau Services Acéricoles

790 1^{er} rang Ouest
Ste-Christine, Qc, J0H 1H0

Contact : Martin Trudeau
Magasin : 579-365-9273
Cell : 438-377-9273
info@servicesacericoles.ca
www.servicesacericoles.ca

Domaine Clovis

(Martin Trudeau Services Acéricoles)
1450, boulevard Fiset
Sorel-Tracy, Qc, J3P 5K4

Contact : Guy Cloutier
Tel. : 438 394-7433
groupeclovisinc@gmail.com

Philippe Bourdeau

460 rang Saint-Charles
Havelock, Qc, J0S 2C0

Cell : 514-318-9102
bourdeauphilippe@hotmail.com

Sylvain Rainville

15 Rue Saint-Joseph
Bedford, Qc, J0J 1A0

Tel. : 450 248-4203
Cell. : 514 222-3501
sylrainvil@hotmail.com

Outaouais

Fabrication LP

9, rue de Neptune RR 1
Saint-André-Avellin, Qc, J0V 1W0

Contact : Luc Pilon
Tel. : 819 983-3817
fabricationlp@hotmail.com

Gaspésie

Distribution Leblanc

173, Armand-Lelièvre
New-Richmond, QC, G0C 2B0

Contact : Benoit Bujold
Bur : 1 877 792-5952
Cell : 418 391-2396
benoit@distributionsleblanc.com

Nouveau-Brunswick

Sirois Acériculture et Forêt Inc.

163, rue le Montagnard
Edmundston, NB, E3V 0B2

Contact : Lucien Sirois
Tel : 506 737-3898
siroisacerifor2018@hotmail.com

Les Équipements Bouchard

1584 chemin Val D'Amours
Val D'Amours, NB, E3N 5N5

Contact : Jean-François Bouchard
Cell. : 506 987-3701
lesequipementsbouchard@gmail.com

Ontario

Charles & Morgan Summers

357 Sweets Corners RD,
Lyndhurst, ON K0E 1N0

Tel. : 613 331-1078
farm@saltofkingston.com

Éric Bélisle

376 Route 200 E.
Casselton, Qc, KOA 1M0

Tel. : 613 764-2289
Cell. : 613 223-4585
belistesugarbush@yahoo.ca

François Brunet

22400 County Road 10
Glen Robertson, ON, K0B 1H0

Tel. : 613 874-2864
Cell. : 613 360-9572
francoisbrunet.lsbilodeau@gmail.com



OPEN *2027*
HOUSE



**EQUIPEMENTS
ON DISPLAY**



**BEST PRICES
OF THE YEAR**



NEWPORT
Vermont

UNITED STATES
326 Bluff Road
Newport, VT 05855
844 382-2244


**APRIL
23-24**

CHESTERVILLE
Quebec

CANADA
5133, de la Plaisance
Chester ville (QC) G0P 1J0
819 382-2244


**MAY
21-22**