



Since 2004

MEMPROTEC

MAPLE SUGARING EQUIPMENT

20 YEARS
Anniversary

2024-2025



Denis Côté

Anne-Marie Côté

Alexandre Côté



Dear maple producers,

It is with great pleasure that we present to you our 2024-2025 catalog for our 20th anniversary. The year 2024-2025 is special for us...

- 🌸 **20 years** that *MemProTec* has specialized in Reverse Osmosis Systems and that your satisfaction is our priority;
- 🌸 **20 years** that we have been the **Pros** of **Membrane Technology**;
- 🌸 **20 years** since we have managed to create an important place for ourselves in the Maple Industry, thanks to the quality of all our products and the most advanced automation Reverse Osmosis Systems on the market;
- 🌸 **20 years** that we have offered a complete range of Reverse Osmosis Systems that meets the needs of all Maple Producers in addition to offering unparalleled service to our Maple Syrup Customers;
- 🌸 **20 years** that we have been continually developing, improving and perfecting our products in order to offer you a Reverse Osmosis System that always meet your expectations;

Since 2004, *MemProTec* has been present in the Maple Syrup Industry in North America to offer you the most complete and effective Maple Reverse Osmosis Systems in the industry. All *MemProTec* Reverse Osmosis Systems are manufactured at our factory in Chesterville, Quebec, which allows us to ensure their impeccable quality. We also have a place of business in Swanton, VT to better service our USA Customers and Dealers. Acquiring a *MemProTec* RO system is an excellent investment for you since you will quickly see that it is easy to use, reliable, affordable in addition to having exceptional resale value!

MemProTec and its network of Distributors are available to serve you throughout the year and offer you comprehensive after-sales service. The *MemProTec* service is renowned by our customers for its excellence in terms of technical support and the valuable advice offered.

Thank you all for your trust throughout the last 20 years. We are motivated to continue serving you with the same dedication for years to come. *MemProTec* wishes you an excellent sugaring season!

Denis, Alexandre and Anne-Marie Côté

TESTIMONIES

of our customers



"I purchased my first Memprotec Reverse Osmosis System in 2014. Since then, I purchase two other ones and I have always been satisfied with the performance and reliability.

The products are of good quality and easy to use. The technical team is very dedicated and the customer service is very good."

Yves Bonin, St-Thomas, QC
4 300 taps



" Memprotec designs simple and reliable Reverse Osmosis System equipped with their most recent technological advances. Denis Côté, an Ingenious Designer, allows the Maple world to go further. I love my MemPro 6000H-SS. "

Pierre Cormier, Dunham, QC
21 000 taps



" I chose Memprotec Reverse Osmosis System because I was looking for a company that specialized only in the field of Reverse Osmosis Systems. After discussion with Mr. Denis Coté and visiting a few producers using Memprotec Reverse Osmosis Systems, the choice was easy to make. It is important to have efficient Reverse Osmosis Systems during the sugaring season, because Reverse Osmosis is the heart of the sugaring operation! The after-sales service and during the season is excellent! The technicians are always available to answer my questions! I would recommend Memprotec, because there Reverse Osmosis is efficient, compact and reliable! I am satisfied with our three Memprotec Reverse Osmosis Systems, because they are easy to use and the service is impeccable!"

Sylvain Caron, St-Joseph-de-Madawaska, NB
80 000 taps



" I chose MemProtec Reverse Osmosis because it is easy to use. I acquired my first Reverse Osmosis System model 5000H in 2008. Since then, I have acquired two more of the 6000H model, the second in 2017 and the third in 2018.

I am very satisfied with the MemProtec Reverse Osmosis, the proof, I have three in my possession which meet the needs of my sugarbush operation of 45,000 taps."

Marcel St-Pierre, St-Aubert, QC
45 000 taps



" The story began in Plessisville during a meeting at the Maple Festival. I was confident in having a good Reverse Osmosis System for my spring 2004. The neighbors were already intrigued to see my new machine working! It was a success. The following year, I had three of my neighbors who purchased Memprotec Reverse Osmosis System!

Thank you to the Memprotec team for your quality service over the years. "

Laurent Breton, St-Ferdinand, QC
3 500 taps

Thank you for your trust!



TABLE OF CONTENTS

Catalog 2024-2025

Reverse osmosis	06
Industrial products	18
Accessories	19
Cleaner and accessories	20

Plastech spouts	24
Plastech connectors	26
Plastech accesories	27

ErabliTEK Releasers	28
ATLAS COPCO Vacuum	30

White PVC	32
Stainless steel fitting, Collars	33
Camlock adapters, Valves	34
Quick clamp fittings, Connecting system	35

Distributors	36
--------------	----

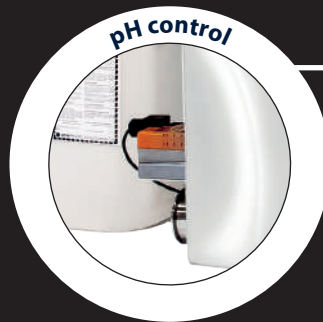
20 YEARS
Anniversary

MemProSMART

The most intelligent
and beloved automation
in the industry

MemPro HI-SS and MemPro DI-SS

- Intelligent operation management
- Automatic tank selection
- Tank level control & monitoring
- Intelligent automated start
- Intelligent pressure management
- Intelligent inline brix management
- System performance management
- Automatic concentrate air « MemPro Flush »
- Intelligent C.I.P. and rinsing
- Remote control & monitoring via web access
- Automated prefilter management
- PWP report by e-mail
- Soap filter management



With an intelligent reverse osmosis **MEMPROTEC** system, you have the possibility to automate gradually according to your budget.



MEMPROTEC

- ❁ **ULTRA COMPACT SYSTEM**
- ❁ **COMPLETE AUTOMATION**
- ❁ **SUPERIOR PERFORMANCE**
- ❁ **EASY TO USE**

Remote web access



Brix control



Memproflush



PATENTED

Other automated model available MemPro HI-SS



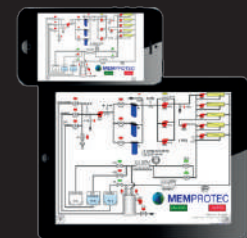
Prefilters management



Reverse osmosis | SS Series MemPro Stainless Steel



ULTRA-COMPACT



Optional
Remotely controlled via web access

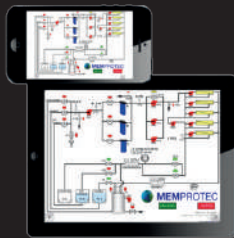
MemPro 12000 DD - 20000 DD-SS

- Superior quality & performance
- Unimodular design
- Positive recirculation on membrane elements
- Stainless steel double ladder frame & plumbing
- Stainless steel pumps with Industrial motors (top mounted)
- Stainless steel integrated CIP tank
- Ventilated stainless steel electrical box
- Permeate & concentrate valve panel
- Option of expansion up to 20 elements & 5 high pressure pumps
- Programmable logic controller
- Conductivity meter & digital temperature monitor
- Low pressure & high temperature safety
- 2 independant banks of 7 X 20 inch filters in SS
- Strainer included
- 5 years limited warranty

Options :

- + Wash water management with pH meter
- + Drainage by air «Mempro Flush» patent # US 8,889,001 B2
- + Individual vessel permeate flowmeters
- + HMI with web access
- + Interstages booster pump
- + Inline brix monitor
- + SS plumbing
- + SS soap filter
- + Complete automation
- + 230V - 460V - 600V - 3 phases

Model	Membrane Quantity	Prefilter 5 microns	Feed Pump	Pressure Pump	Recirculation Pump	Amps. 240 volts	Dimensions (L x D x H)
MemPro 12000 DD-SS	12 x 8"	2 x 7 x 20"	5 hp	2 x 7,5 hp	6 x 3 hp	168	112" x 53" x 75"
MemPro 14000 DD-SS	14 x 8"	2 x 7 x 20"	5 hp	3 x 7,5 hp	7 x 3 hp	216	112" x 53" x 75"
MemPro 16000 DD-SS	16 x 8"	2 x 7 x 20"	5 hp	3 x 7,5 hp	8 x 3 hp	229	112" x 53" x 75"
MemPro 18000 DD-SS	18 x 8"	2 x 7 x 20"	7,5 hp	4 x 7,5 hp	9 x 3 hp	278	112" x 53" x 75"
MemPro 20000 DD-SS	*20 x 8"	2 x 7 x 20"	7,5 hp	4 x 7,5 hp	10 x 3 hp	291	112" x 53" x 96"



Optional

Remotely controlled via web access

MemPro 4000 D - 10000 D-SS

- Superior quality & performance
- Unimodular design
- Positive recirculation on membrane elements
- Stainless steel construction frame & plumbing
- Stainless steel pumps with Industrial motors (top mounted)
- Stainless steel integrated CIP tank
- Ventilated stainless steel electrical box
- Permeate & concentrate valve panel
- Option of expansion up to 20 elements & 5 high pressure pumps
- Programmable logic controller
- Conductivity meter & digital temperature monitor
- Low pressure & high temperature safety
- 2 independant banks of 3 X 20 inch filters
- Strainer included
- 5 years limited warranty

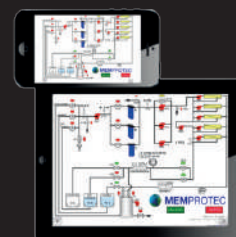
Options :

- + Drainage by air «Mempro Flush» patent # US 8,889,001 B2
- + Individual vessel permeate flowmeters
- + HMI with web access
- + Interstages booster pump
- + Inline brix monitor
- + SS plumbing
- + Soap filter
- + Complete automation
- + 230V - 460V - 600V - 3 phases
- + 1 independant bank of 7 X 20 inch filters in SS

Model	Membrane Quantity	Prefilter 5 microns	Feed Pump	Pressure Pump	Recirculation Pump	Amps. 240 volts	Dimensions (L x D x H)
MemPro 4000 D-SS	4 x 8"	6 x 20"	1 x 3 hp	2 x 5 hp	2 x 3 hp	82	109" x 36" x 76"
MemPro 6000 D-SS	6 x 8"	6 x 20"	1 x 3 hp	3 x 5 hp	3 x 3 hp	114	109" x 36" x 76"
MemPro 8000 D-SS *	8 x 8"	6 x 20"	1 x 5 hp	2 x 7.5 hp	4 x 3 hp	139	109" x 36" x 76"
MemPro 10000 D-SS	10 x 8"	6 x 20"	1 x 5 hp	2 x 7.5 hp	5 x 3 hp	157	109" x 36" x 96"

* picture above

Reverse osmosis | SS Series MemPro Stainless Steel



Optional
Remotely controlled
via web access

MemPro 1000 H - 6000 H-SS

- Superior quality & performance
- Modular conception
- Positive recirculation on membrane elements
- Stainless steel construction frame & plumbing
- Stainless steel pumps with industrial motors (top mounted)
- Stainless steel modular CIP tank
- Ventilated stainless steel electrical box
- Permeate & concentrate valve panel
- Option of expansion up to 8 elements & 4 high pressure pumps
- Programmable logic controller
- Conductivity meter & digital temperature monitor
- Low pressure & high temperature safety
- 2 independant banks of 2 X 20 inch filter housings
- Strainer included
- 5 years limited warranty

Options :

- + Wash water management with pH meter
- + Drainage by air «Mempro Flush» patent # US 8,889,001 B2
- + Individual vessel permeate flow meters
- + HMI with web access
- + Interstages booster pumps
- + Inline brix monitor
- + SS valves
- + 230V - 460V - 600V - 3 phases
- + Complete automation

Model	Membrane Quantity	Prefilter 5 microns	Feed Pump	Pressure Pump	Recirculation Pump	Amps. 240 volts	Dimensions (L x D x H)
MemPro 1000 H-SS	1 x 8"	4 x 20"	2,5 hp	1 x 5 hp	1 x 1,5 hp	35	69" x 33 1/2" x 73" + 19"
MemPro 2000 H-SS	2 x 8"	4 x 20"	2,5 hp	1 x 5 hp	2 x 1,5 hp	45	69" x 33 1/2" x 73" + 19"
MemPro 3000 H-SS	3 x 8"	4 x 20"	2,5 hp	2 x 5 hp	3 x 1,5 hp	70	69" x 33 1/2" x 73" + 19"
MemPro 4000 H-SS *	4 x 8"	4 x 20"	2,5 hp	2 x 5 hp	4 x 1,5 hp	77	69" x 33 1/2" x 73" + 19"
MemPro 5000 H-SS	5 x 8"	4 x 20"	2,5 hp	3 x 5 hp	5 x 1,5 hp	103	69" x 33 1/2" x 90" + 19"
MemPro 6000 H-SS	6 x 8"	4 x 20"	2,5 hp	3 x 5 hp	6 x 1,5 hp	110	69" x 41" x 90" + 19"



Optional

Remotely controlled via web access

MemPro 1200 V - 2400 V-SS

- Superior quality & performance
- Compact
- Easy & simplified operation
- Positive recirculation on membrane elements
- Stainless steel frame & plumbing
- Mounted on casters
- Stainless steel recirculation pump with industrial motor (top mounted)
- Stainless steel electrical box
- Stainless steel modular CIP tank
- Permeate & concentrate valve panel
- Option of expansion up to 4 elements, 2 high pressure pumps
- Programmable controller
- Low pressure & high temperature safety protection
- Feed pump & 2 filter housings (20")
- Digital conductivity monitor
- 5 years limited warranty

Options :

- + Inlet strainer 1.5"
- + Horizontal element support
- + Remotely controlled via web access
- + Inline brix monitor
- + 230V - 460V - 600V - 3 phases

Model	Membrane Quantity	Prefilter 5 microns	Feed Pump	Pressure Pump	Recirculation Pump	Amps. 240 volts	Dimensions (L x D x H)
MemPro 1200 V-SS *	2 x 8"	2 x 20"	2,5 hp	1 x 5 hp	2 x 1,5 hp	45	80" x 24" x 64"
MemPro 1800 V-SS	3 x 8"	2 x 20"	2,5 hp	1 x 7,5 hp	3 x 1,5 hp	64	100" x 24" x 64"
MemPro 2400 V-SS	4 x 8"	2 x 20"	2,5 hp	1 x 7,5 hp	4 x 1,5 hp	71	120" x 24" x 64"

* picture above

Reverse osmosis | SS Series MemPro Stainless Steel



Optional

Remotely controlled via web access

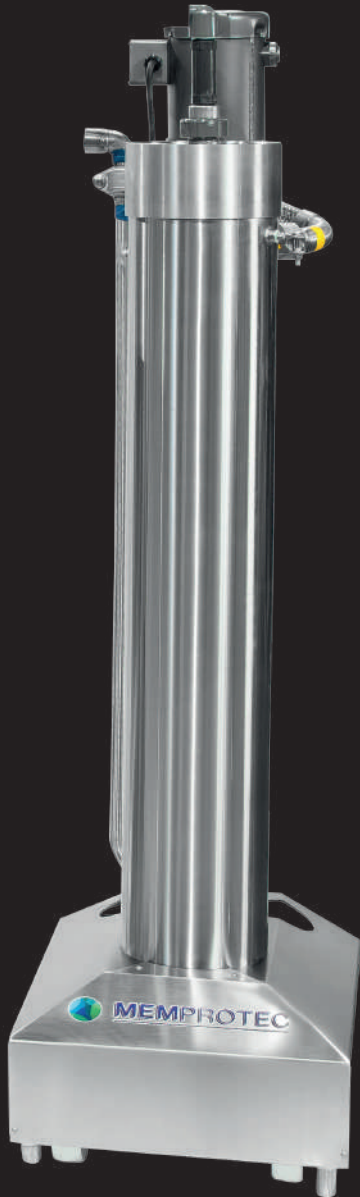
MemPro 450 V - 900 V-SS

- Superior quality & performance
- Compact modular conception
- Easy & simplified operation
- Positive recirculation on membrane elements
- Stainless steel frame & plumbing
- Mounted on casters
- 2 Stainless steel high pressure pumps with industrial motors (top mounted)
- Stainless steel modular CIP tank
- Stainless steel electrical box
- Permeate & concentrate valve panel
- Option of expansion up to 3 elements
- Low pressure & high temperature safety protection
- Feed pump & 2 filter housings
- Digital conductivity monitor
- 5 years limited warranty

Options :

- + Inlet strainer 1.5 inch
- + Drainage by air «Mempro Flush» patent # US 8,889,001 B2
- + Individual vessel flowmeters
- + Wi-Fi remote control
- + Inline brix monitor
- + 230V - 460V - 600V - 3 phases

Model	Membrane Quantity	Prefilter 5 microns	Feed Pump	Pressure Pump	Recirculation Pump	Amps. 240 volts	Dimensions (L x D x H)
MemPro 450 V-SS	1 x 8"	1 x 20"	1 hp	3 hp	1,5 hp	27	19" x 25" x 64"
MemPro 600 V-SS *	1 x 8"	1 x 20"	1 hp	5 hp	1,5 hp	34	19" x 25" x 64"
MemPro 900 V-SS	2 x 8"	1 x 20"	2,5 hp	5 hp	2 x 1,5 hp	45	38" x 25" x 64"



Expansion Unit

- Superior quality and performance
- Compact conception
- Easy and quick installation
- Positive recirculation on membrane elements
- Stainless steel frame and plumbing
- Mounted on caster (Only vertical model)
- Stainless steel recirculation pump with industrial motor (Top mounted)
- 5 years limited warranty

Model	Membrane Quantity	Recirculation Pump	Amps. 240 volts	Dimensions (L x D x H)
SS Vertical Post *	1 x 8"	1.5 hp	6.5	18" x 24" x 62"
SS Horizontal Post	1 x 8"	1.5 hp	6.5	62" x 9" x 20"
SS Double Post	2 x 8"	3 hp	13	105" x 10" x 21"

Reverse osmosis | SS Series MemPro Stainless Steel



Optional
Remotely controlled via web access



MemPro 350 H - 350 V-SS

- Superior quality & performance
- Affordable & compact
- Frost protection - drainable conception
- Horizontal installation on top of sap tank
- No need of concentrate tank (batch concentration)
- 10 minutes fast & simple installation
- Low electrical power consumption
- Easy & simplified operation
- Positive recirculation on membrane elements
- Stainless steel frame & plumbing
- Mounted on casters
- Stainless Steel recirculation pump
- SS high efficiency pressure pumps
- Low pressure and high temperature safety protection
- 10 inch filter housing

Options :

- + GFCI Breaker (must be used when installation above sap tank)
- + Concentrate & permeate valve panel
- + Inlet strainer 1 po

Model Ga/hour	Membrane Quantity	Prefilter 5 microns	Pressure Pump	Recirculation Pump	Amps. 240 volts	Weight (lbs)	Dimensions (L x D x H)
MemPro 350 H-SS	1 x 8"	1 x 10"	1,5 hp	1,5 hp	15	320	64" x 22" x 23"
MemPro 350 V-SS	1 x 8"	1 x 10"	1,5 hp	1,5 hp	15	335	19" x 25" x 64"



Optional

Remotely controlled via web access

MemPro 100-200 H-SS

- Superior quality & performance
- Affordable & compact
- Frost protection - drainable conception
- Horizontal installation on top of sap tank
- No need of concentrate tank (batch concentration)
- 10 minutes fast & simple installation
- Low electrical power consumption
- Easy & simplified operation
- Positive recirculation on membrane elements
- Stainless steel frame & plumbing
- Mounted on casters
- Stainless Steel recirculation pump
- SS high efficiency pressure pumps
- Low pressure and high temperature safety protection
- 10 inch filter housing
- Strainer included
- 5 years limited warranty
- Patent # CA 2,642,050 & # US 8,025,799

Options :

- + GFCI Breaker (must be used when installation above sap tank)
- + Concentrate & permeate valve panel
- + Inlet strainer 1 po

Model Ga/hour	Membrane Quantity	Prefilter 5 microns	Pressure Pump	Recirculation Pump	Amps. 120 volts	Weight (lbs)	Dimensions (L x D x H)
MemPro100 H-SS	1 x 4"	1 x 10"	½ hp	½ hp	14	150	50" x 16" x 21"
Mempro 200 H-SS *	2 x 4"	1 x 10"	¾ hp	½ hp	18	175	50" x 16" x 21"

* picture above

Reverse osmosis | SS Series MiniPro Stainless Steel



MiniPro 100 SS

- For maple bush of 200 to 500 taps
- Superior quality & performance
- Affordable & compact
- Low pressure protection
- Frost protection - drainable conception
- Horizontal installation on top of sap tank or vertical installation
- Fast & simple installation
- No need of concentrate tank (batch concentration)
- Low electrical power consumption
- Easy & simplified operation
- Stainless steel frame & plumbing
- Mounted on casters
- SS high efficiency pressure pumps
- 10 inch filter housing
- Strainer included
- 5 years limited warranty
- Patent # CA 2,642,050
- Patent # US 8,025,799

Options :

- + Flowmeters panel
- + 120 volt GFCI breaker
- + Transform vertically

Possibility of transforming vertically



Model	Membrane Quantity	Prefilter 5 microns	Pressure Pump	Amps. 120 volts	Weight (lbs)	Dimensions (L x D x H)
MiniPro 100 H-SS	1 x 4"	1 x 10"	¾ hp	10,4	88,5	50" x 16" x 21"



Smart pH neutralizer



MemPro pH Control

- Neutralize the pH of your washing water from your RO with our **MemPro pH Control** system in a simple and completely automated way.
- Whether your water is acidic or basic, our system will inject acid or a base as needed to neutralize the solution and thus safely reject it in the environment.
- You will be able to do and monitor the neutralization process remotely using the touch screen of the **MemPro pH Control** system with wifi.
- 2 models are available: the smart model and the automatic model.
- Greatly reduce the amount of wash water to be neutralized with the Memproflush technology.
- Compatible with **MEMPROTEC RO's** and all brands of RO'S.

Inform yourself!





Delta Pro 2400-9600

- Frame: Stainless Steel
- Control box certified NEMA
- Stainless steel plumbing 304
- Solenoid valve 304 SS
- Electronic controller with indicator light for full tank, low pressure monitoring at feed pump, pre-treatment, rinse and start-up interlock.
- Sediment pre-filter BB - 20" 5 micron
- Automatic rinsing with programmable supply water
- 1 year limited warranty

Model	Membrane Quantity	Gallons / day	Pressure Pump	Amps. 240 volts	Dimensions (L x D x H)
Delta Pro 2400	1 x 4"	2400	1 hp	6,8	24" x 16" x 55"
Delta Pro 4800*	2 x 4"	4800	1 hp	6,8	24" x 16" x 55"
Delta Pro 7200	3 x 4"	7200	1,5 hp	9,2	24" x 16" x 55"
Delta Pro 9600	4 x 4"	9600	1,5 hp	9,2	24" x 16" x 55"

* picture above



Measuring tools

Digital Clamp Meter 8344707
 Digital refractometer 694076



Inline refractometer

0-33 3603
0-80 3604 (for syrup)



3603

3604

Automatic draw-off valve

506050



BARINOX Stainless Steel Drums

25 gl 3805100
34 gl 3805101
40 gl 3805104
Barrel cap 3805102



Strainer

1" 398505
1½" 39957
2" 398504
3" 398507



Valve panel

1/2" 501525
3/4" 501526
1" 501527
1-1/4" 501530



20" Filter Housing

Big blue 399931
10" 38019
20" 38009



Electrical components

GFCI 240 volts 20 amp (MemPro 350) 2021605
120V Dual Wall GFCI outlet 200406



Membrane storage Vessel

4" 899254
8" 899255



Membrane tools

Membrane puller 8" 693862
Membrane puller 8 ½" 69386
Membrane pusher 8 ½" 693863



Memproflush regulator



399575M

SS Filter

SS Filter with 7 cartridges of 20"
 501910





100%
STAINLESS STEEL
- plates and frame -



Syrup filter press 12x12

Several sizes available up to 10 filtration plates with hydraulic jack and 12 ton air.

Syrup filter press 20x20

Several sizes available from 7 to 20 filtration plates with hydraulic jack and 20 ton air.

Accessories included with the presses:

- Drain valve
- Industrial wheels on bearing
- Tilt failure for better emptying
- Drain plug on failure
- Stainless steel jack rod
- Knife to reduce number of plates
- 2 sets of filters for each syrup press
- Pump mounting bracket

Complete filter kit glass bead media



Plastic filter 45 gpm	399954
Plastic filter 75 gpm	399955
Stainless steel filter 75 gpm	399957
Glass media 60 lbs	3807660

The glass media filter allows maple sap to be filtered before it enters in the Reverse Osmosis System. This ensures well-filtered sap and helps reduce the amount of Purtrix filter cartridges needed for filtration. It is still important to always use the 5 micron 20" filter cartridges on the Reverse Osmosis System to ensure good filtration.

The filter is available in plastic or stainless steel. The pumps are also available in plastic or stainless steel.

Memprotec glass bead media blend provides superior filtration by retaining particles 3 microns and larger. The filter is easy to backwash in minutes with a single, simple, easy-to-use control valve. On the stainless-steel model, there is a 5" porthole at the top to fill the glass bead media filter as well as a second porthole at the bottom to empty it. It also has a drain valve with strainer for drainage.



PUMP CHOICE
With the purchase
of a filter kit.





Cleaners and accessories

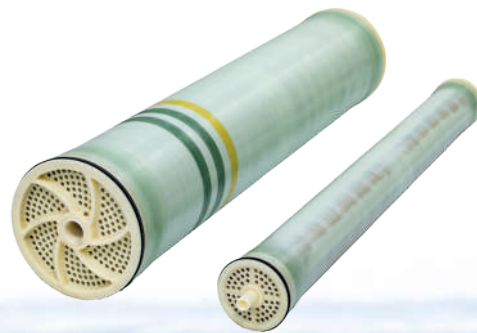
Monitoring and maintenance of your membranes every day of the sugar season is essential to maintain optimal concentration performance throughout the season and to preserve your membranes in the long run. **MEMPROTEC** offers you a complete range of high performance maintenance products for your RO.

Membrane 8"

Membrane MemPro HC+8040	299701
Membrane MemPro HC-70	299686
Membrane MemPro HP-70	299700
Membrane MemPro 70-400	3999915
Membrane MemPro 8040-LFT-HE	399991
Membrane MemPro SF-70	2996996

Membrane 4"

Membrane HP-40	299687
Membrane MemPro 4040-LFT-HE	399994
Membrane MemPro SF-40	2996997



Filter cartridge

K	9 -7/8" Purtrex 5 microns	39905
L	20" Purtrex 5 microns	38002

4½ x 20" Soap filter

I	Single use	255496
J	Reusable SS	380449

7" x 30" Soap prefilter

380775





Cleaners for membranes

Bio-Clean B cleaner

Membrane cleaner for Mempro 8040 LFT-HE, Filmtec, Mempro NF-70, H2O, Hydranautics

- A** 4 L 380015 **B** 20 L 380016

Bio-Protoc PG

Long term storing solution.

- C** 4 L 37985PP **D** 20 L 37986PP

Bio-Acid

Cleaner for reverse osmosis or nanofiltration membrane.

- | | | |
|-----------------------|---------------|--------|
| E 2 KG 37995 | LIQUID | |
| F 4 KG 379955 | 20 L | 380515 |
| G 18 KG 379951 | 205 L | 380514 |

Bio-Preserve

Short term preservation.

- H** 16 oz 379905

OXISAN Cleaner

- 4 L 38006
- 20 L 380061



Cleaners for pans

Super Clean Cleaner food gade

- 4 L 380071
- 20 L 38007



Esthetic Cleaner for stainless steel accessories

- 4 L 38050



Filtering powder

- Hy-Flo 50 lbs 38003



Cleaners for tubing

Isopropyl Alcohol 70%

- 20 L 380340
- 205 L 380342



SPOUTS

5/16" SERIE



SOON AVAILABLE IN 3/16"
ASK YOUR DISTRIBUTOR!



	 PERMANENT SPOUT ● orange	 PERMANENT SPOUT ● green	 PERMANENT SPOUT ● light blue	 PERMANENT SPOUT ● dark blue	 PERMANENT SPOUT ● black	 PERMANENT SPOUT ○ white
19/64	302 942-O	302 704-V	302 704-B	302 910	302 704	302 909
1/4	302 944	302 943	302 912	302 913	302 911	302 914
3/16					302 911-316	

SEASONAL

AVAILABLE :

- blue
- green
- orange
- clear
- smoked gray

				
CLEAR SPOUT REDUCER 7/16" TO 5/16"	CLEAR SPOUT REDUCER 1/4"	CLEAR SPOUT REDUCER 1/4"	CLEAR SPOUT REDUCER 5/16"	SPOUT REDUCER MALE 7/16" TO 5/16"
302 702-PC	302 908	302 907	302 703-PC	● black only 302 702



ORANGE SPOUT SEASONAL
19/64"

● orange

302 704-O



WHITE SPOUT SEASONAL
19/64"

○ white

302 704-BC

NEW

SADDLE

- FIX HEAD
- STAINLESS STEEL COLLAR
- SAME COLLAR FOR 3/4", 1" AND 1 1/4"

302 888



CONNECTORS

3/16" SERIE



TEE LONG CUP

302 928
● black



**END LONG T LONG CUP
OBSTRUÉ**

302 929
● red



**END HOOK T LONG CUP/
PIN**

302 934
● black



TEE SHORT CUP

302 926
● black



**END LINE T / PIN
OBSTRUÉ**

302 927
● red



**END HOOK T SHORT CUP/
PIN**

302 936
● black



TEE LONG CUP/PIN

302 930
● black



**END LINE T LONG CUP/PIN
OBSTRUÉ**

302 931
● red



END HOOK T LONG CUP

302 935
● black



TEE MALE PIN

302 932
● black



**END LINE T/PIN
OBSTRUÉ**

302 933
● red



END HOOK T SHORT CUP

302 937
● black



**SINGLE SADDLE
MANIFOLD W/SCREW
SWIVEL HEAD 3/16"**

302 820 - 3/4"
302 821 - 1"
302 822 - 1 1/4"
● black



TEE REGULAR

302 938
● black



END LINE HOOK

302 940
● black



ELBOW

302 939
● black



**ELBOW
5/16" - 3/16"**

302 925
● black



CONNECTOR W/HOOK

302 941
● black

CONNECTORS

5/16" SERIE



TEE LONG CUP
302 915
● black



**END LINE T LONG CUP
OBSTRUÉ**
302 916
● red



**END HOOK T
LONG CUP/PIN**
302 919
● black



TEE FEMELLE CUP
302 715
● black



**END LINE T SHORT CUP
OBSTRUÉ**
302 717
● red



**END HOOK T
SHORT CUP/PIN**
302 921
● black



TEE LONG CUP/PIN
302 917
● black



**END LINE T LONG
CUP/PIN OBSTRUÉ**
302 918
● red



**END HOOK T
LONG CUP**
302 920
● black



TEE MALE PIN
302 714
● black



**END LINE T/PIN
OBSTRUÉ**
302 716
● red



**END HOOK T
SHORT CUP**
302 922
● black



TEE 5/16" - 3/16"
302 924
● black



TEE REGULAR
302 712
● black



END LINE HOOK
302 923
● black



ELBOW
302 720
● black



**CONNECTOR
W/HOOK**
302 722
● black



**END LINE
LOOP/RING**
302 728
● black



CONNECTOR
302 710
● black

ACCESSORIES



FLAG MARKER

- 302 885-R ● red
- 302 885-O ● orange
- 302 885-Y ● yellow



SINGLE SADDLE MANIFOLD W/SCREW SWIVEL HEAD 3/16" OR 5/16"

- 302 820 - 3/4"
- 302 821 - 1"
- 302 822 - 1 1/4"
- black



DOUBLE SADDLE MANIFOLD W/SCREW SWIVEL HEAD 5/16"

- 302 830 - 3/4"
- 302 831 - 1"
- 302 832 - 1 1/4"
- black



COLLAR

- 302 825 - 3/4"
- 302 826 - 1"
- 302 827 - 1 1/4"
- black



VACUUM TESTER ADAPTER

Test vacuum on the spout or/and the mainline.

- 302 884



SINGLE SADDLE MANIFOLD 1" WITH COLLAR - FIXED HEAD

- 302 887
- black



SADDLE MAINFOLD UNIVERSAL-FIXED HEAD

- 302 905
- black



FORK 5/16"

- 302 724
- black



END LINE VALVE

- 302 741 - 1"
- 302 741 - 3/4"



SADDLE MANIFOLD RUBBER 5/16"

- 302 829
- black



STRANGLER W/ LOOP / RING 5/16"

- 302 730
- noir



STRANGLER W/HOOK 5/16"

- 302 731
- black



CAP MALE W/HOOK 5/16"

- 302 734
- black



CAP FEMALE - END CAP 5/16"

- 302 736
- noir



FLASK CLEAR AND CAP

- 302 901



STAR 3-WAYS 5/16"

- 302 753
- black



STAR 6-WAYS 5/16"

- 302 756
- black

PERFECT FOR SPOUTS SANITATION

Releasers and humidity trap



ÉrabliTEK releaser

Four models available depending on the number of taps and each of them is available either much mechanical or electrical.

- Releaser 12" +/- **2 500 taps**
- Releaser 24" +/- **5 000 taps**
- Release 36" +/- **10 000 taps**
- Release 48" +/- **15 000 taps**



No sap kick-back

The ÉrabliTEK No sap kick-back is designed to physically prevent water from backing up to your vacuum pump and protect it from damage. In the event that nothing is able to stop the flow of water that goes back to your vacuum pump, the No sap kick-back will be the ultimate protection.

It is available for air line 2" and 3".



Humidity trap

The ÉrabliTEK moisture trap is designed to operate in absolute vacuum. It removes as much as possible the fine water droplets that can reach the vacuum pump with its centrifugal force and coalescing filters.

- **1 filter** : Maximum **3 000 taps**
- **2 filters** : Maximum **6 000 taps**
- **3 filters** : Maximum **9 000 taps**
- **4 filters** : Maximum **12 000 taps**
- **5 filters** : **12 000 taps +**



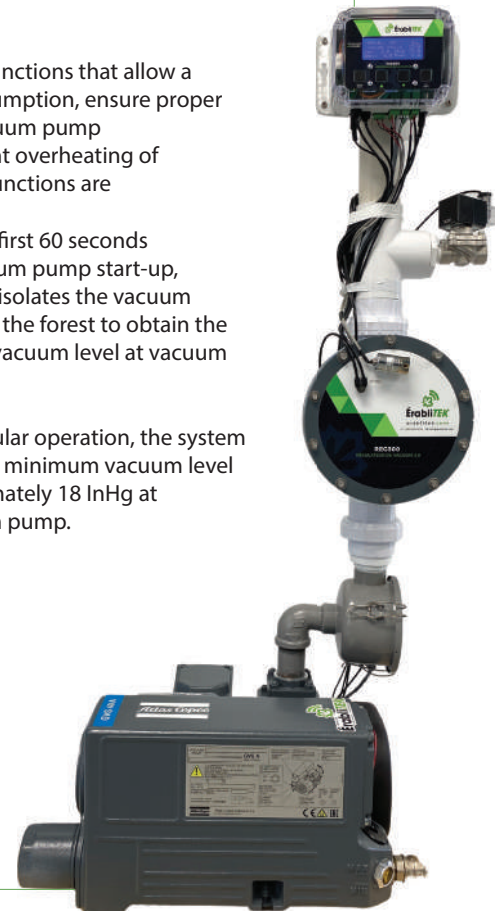
GHS300 Stand-alone modulation controller 3.0

For Atlas Copco GHS VSD+
Vacuum Pump

The ÉrabliTEK stand-alone modulation controllers and the stand-alone vacuum control system are designed to increase the efficiency of your sugar bush by controlling the vacuum level relative to the temperature. By modulating or regulating your vacuum pump, you avoid freezing at the level of the tubing in the sugarbush and seek the maximum of your flows.

The benefits of the controller

- Stable and precise regulation of the vacuum level without creating leaks, thus without recoil in the sugarbush.
- Stable and precise regulation of the vacuum level without creating leaks, thus without recoil in the sugarbush.
- Independent regulation of the vacuum level of several controllers connected to the same vacuum pump.
- By independently managing the vacuum level at the release valve and the vacuum pump we can have a regulation of the vacuum level from 0 InHg to the absolute vacuum at the release valve while keeping the maximum vacuum level at the vacuum pump. The closer the vacuum pump is to the absolute vacuum, the less it heats up and the less energy it consumes.
- Waiting for the moisture trap to be empty before restarting the vacuum pump will prevent another immediate shutdown (during an emergency stop) Independent regulation of the vacuum level of several controllers connected to the same vacuum pump.
- The system has two functions that allow a reduced energy consumption, ensure proper lubrication of the vacuum pump (oil pump) and prevent overheating of the engine. The two functions are
 - During the first 60 seconds of the vacuum pump start-up, the system isolates the vacuum pump from the forest to obtain the maximum vacuum level at vacuum pump only.
 - During regular operation, the system maintains a minimum vacuum level of approximately 18 InHg at the vacuum pump.



Vacuum



ATLAS COPCO Screw pumps

Oil bath with
VSD technology

Clean, quiet and energy efficient. Our GHS VSD+ series reduces your energy costs by 50% on average and increases production speed. The GHS VSD+ series is a highly efficient and intelligent range of vacuum pumps with variable speed drive (VSD).

GHS 350-900VSD+ Series

- High energy efficiency
- Guaranteed reliability
- Sustainable/environmentally friendly productivity
- Quick and easy installation

High energy efficiency

With variable speed and set point control, the GHS VSD+ series delivers the desired flow without excess. There is no waste of energy. State-of-the-art screw technology, driven directly by an IE3 high-efficiency engine, also contributes to low energy consumption.

Assured Reliability

The hot and cold areas isolate the heat-emitting and high-temperature components from the electronic components, ensuring high pump performance, without condensation. This ensures perfect cooling and a long service life of the electronic components. In addition, the life of the screw element is much longer than that of the pallets, which makes it possible to considerably increase the intervals between maintenance.

Model	Capacity (CFM)	Max. Vac. (InHg)	Hp
GHS350VSD+	240	29.91	7.5
GHS585VSD+	330	29.91	10
GHS730VSD+	430	29.91	15
GHS900VSD+ 3PH seulement	510	29.91	20

Rotary Vane Oil Bath Pumps

The GVS 25-630 A series operates on the proven principle of oil-bath rotary vane pumps. This principle has been proven in all industrial vacuum applications, with many innovative features that guarantee the best performance at reduced life cycle costs.



GVS Series 25-630 A

- Robust design
- Extended oil life
- Ready for use
- Clean and effective

Benefits You Can Count On

The new GVS A series is easy to install thanks to its compact design. It guarantees high reliability thanks to a robust design and optimal oil retention at all operating pressures while maintaining low noise and vibration levels. With the most suitable pumps for very low temperatures on the market, we extend the life of the oil.

Ready-to-Use

The GVS 25-630 A rotary vane vacuum pumps are delivered ready-to-use with all the options and accessories needed for the vast majority of vacuum applications. If you have a specific need, contact your Atlas Copco advisor to help you choose the best solution.

Model	Capacity (CFM)	Max. Vac. (InHg)	Hp
GVS25A	17	29.91	1.2
GVS40A	31	29.91	2
GVS60A	42	29.91	3
GVS100A	69	29.91	5
GVS150	107	29.92	5
GVS200A	130	29.92	7.5
GVS300A	200	29.92	8.6
GVS470A	366	29.92	15

White PVC



"T" Adaptor soc

(soc x soc)	
1 1/2"	30J01-150
2"	30J01-200

(soc x soc x fnpt)	
1 1/2"	30J02-150
2"	30J02-200
1 1/2" x 1/2"	30J03-150-050
1 1/2" x 3/4"	30J03-150-075
1 1/2" x 1 1/4"	30J03-150-125
2" x 1/2"	30J03-200-050
2" x 3/4"	30J03-200-075
2" x 1"	30J03-200-100
2" x 1 1/4"	30J03-200-125
2" x 1 1/2"	30J03-200-150

(fnpt x fnpt)	
1/2"	30J04-050
3/4"	30J04-075
1"	30J04-100
1 1/4"	30J04-125
1 1/2"	30J04-150
2"	30J04-200



"Y" Adapter soc

(soc x soc)	
1 1/2"	30J39-150
2"	30J39-200



90° Elbow

(soc x soc)	
1 1/2"	30J05-150
2"	30J05-200

(soc x fnpt)	
1 1/2"	30J07-150
2"	30J07-200
Réduit - 1 1/2" x 1 1/4"	30J08-150-125
Réduit - 2" x 1 1/4"	30J08-200-125
Réduit - 2" x 1 1/2"	30J08-200-150

(fnpt x fnpt)	
1/2"	30J09-050
3/4"	30J09-075
1"	30J09-100
1 1/4"	30J09-125
1 1/2"	30J09-150
2"	30J09-200

(spig x collé)	
1 1/2"	30J10-150
2"	30J10-200

(soc x mnpt)	
1 1/2"	30J11-150
2"	30J11-200

(spig x fnpt)	
1 1/2"	30J12-150

(mnpt x fnpt)	
1 1/2"	30J14-150
2"	30J14-200



Cross soc

(soc x soc)	
1 1/2"	30J19-150
2"	30J19-200



Union soc dismountable buna-n O'ring

(soc x soc)	
1"	30J34-150
2"	30J34-200



45° Elbow

(soc x soc)	
1 1/2"	30J17-150
2"	30J17-200



Cap soc

(soc x soc)	
1 1/2"	30J30-150
2"	30J30-200

Stainless steel fittings

A Threaded adapter

(mnpt x ins)	
1/2" x 1/2"	6963501
1/2" x 3/4"	6963502
3/4" x 1/2"	6963503
3/4" x 3/4"	6963504
3/4" x 1"	6963505
1" x 3/4"	6963506
1" x 1"	6963507
1" x 1 1/4"	6963508
1 1/4" x 1"	6963509
1 1/4" x 1 1/4"	6963510
1 1/4" x 1 1/2"	6963511
1 1/2" x 1"	6963512
1 1/2" x 1 1/4"	6963513
1 1/2" x 1 1/2"	6963514
1 1/2" x 2"	6963515
2" x 1 1/2"	6963516
2" x 2"	6963517
3" x 3"	6963518

B Straight coupling

(ins x ins)	
1/2"	6963520
3/4"	6963521
1"	6963522
1 1/4"	6963523
1 1/2"	6963524
2"	6963526
3"	6963527

C Reducer insert

(ins x ins)	
1" x 3/4"	6963530
1 1/4" x 3/4"	6963531
1 1/4" x 1"	6963532
1 1/2" x 3/4"	6963533
1 1/2" x 1"	6963534
1 1/2" x 1 1/4"	6963535
2" x 1"	6963536
2" x 1 1/4"	6963537
2" x 1 1/2"	6963538
3" x 2"	6963539

D Elbow welded 90°

(ins x ins)	
3/4"	6963540
1"	6963541
1 1/4"	6963542
1 1/2"	6963543
2"	6963544

E "Y" fitting

(ins x ins)	
1/2" x 1/2"	6963560
3/4" x 1/2"	6963561
3/4" x 3/4"	6963562
1" x 3/4"	6963563
1" x 1"	6963564
1 1/4" x 3/4"	6963565
1 1/4" x 1"	6963566
1 1/4" x 1 1/4"	6963567
1 1/2" x 3/4"	6963568
1 1/2" x 1"	6963569
1 1/2" x 1 1/4"	6963570
1 1/2" x 1 1/2"	6963571
2" x 3/4"	6963572
2" x 1"	6963573
2" x 1 1/4"	6963574
2" x 1 1/2"	6963575
2" x 2"	6963576

F "Y" reducer fitting

(ins x ins)	
1" x 3/4" x 3/4"	6963580
1 1/4" x 1" x 3/4"	6963581
1 1/4" x 1" x 1"	6963582
1 1/2" x 1" x 3/4"	6963583
1 1/2" x 1" x 1"	6963584
1 1/2" x 1 1/4" x 3/4"	6963585
1 1/2" x 1 1/4" x 1"	6963586
1 1/2" x 1 1/4" x 1 1/4"	6963587
2" x 1 1/2" x 1"	6963588
2" x 1 1/2" x 1 1/4"	6963589
2" x 1 1/2" x 1 1/2"	6963590

Elbow welded 45°

(ins x ins)	
3/4"	6963550
1"	6963551
1 1/4"	6963552
1 1/2"	6963553
2"	6963554



G "T" Fitting

(ins x ins)	
3/4" x 1 1/4" x 1 1/4"	6963591
1" x 1" x 3/4"	6963592
1" x 1" x 1"	6963593
1 1/4" x 1 1/4" x 3/4"	6963594
1 1/4" x 1 1/4" x 1"	6963595
1 1/4" x 1 1/4" x 1 1/4"	6963596
1 1/2" x 1 1/2" x 1"	6963597
1 1/2" x 1 1/2" x 1 1/4"	6963598
1 1/2" x 1 1/2" x 1 1/2"	6963599
2" (oversized) x 2" (oversized) x 1"	69635991
2" (oversized) x 2" (oversized) x 1 1/4"	69635992
2" (oversized) x 2" (oversized) x 1 1/2"	69635993
2" (oversized) x 2" (oversized) x 2" (oversized)	69635994
3" x 3" x 3" (ins x ins)	69635995

Collars

High Performance Stainless steel collar grade 304

For tube:		Width / Thickness
3/4"	599905	14.2 mm X 0.7 mm
1"	59990	14.2 mm X 0.7 mm
1 1/4"	32824	14.2 mm X 0.7 mm
1 1/2"	52.HAS020	14.2 mm X 0.7 mm
2"	52.HAS028	15.8 mm X 0.8 mm
3"	52.HAS044	15.8 mm X 0.8 mm



Stainless steel Industrial collar

For tube:		
1"	6960209	Single Hex Bolt
1 1/4"	6960211	Double Hex Bolt
1 1/2"	6960218	Double Hex Bolt
2"	6960215	Double Hex Bolt
3"	6960222	Double Hex Bolt



Camlock adapters

POLYPROPYLENE

All adapters are available in stainless steel



Part A

3/4"	69558
1"	69679
1 1/4"	696794
1 1/2"	696796
2"	696797



Part B

3/4"	69674
1"	69551
1 1/4"	69562
1 1/2"	695515
2"	695516



Part C

3/4"	69557
1"	69677
1 1/4"	69422
1 1/2"	694224
2"	695571



Part D

3/4"	69561
1"	69678
1 1/4"	696784
1 1/2"	695621
2"	69563



Part E

3/4"	69556
1"	69676
1 1/4"	696765
1 1/2"	696764
2"	6967645



Part F

3/4"	69675
1"	69680
1 1/4"	695586
1 1/2"	696763
2"	6967635



Part DP

3/4"	695632
1"	695633
1 1/4"	695634
1 1/2"	695635
2"	695636



Part DC

3/4"	695585
1"	695589
1 1/4"	695590
1 1/2"	695591
2"	695592

Valves



Ball Valve

(threaded)	
1/2"	9999501
3/4"	9999502
1"	9999503
1 1/4"	9999504
1 1/2"	9999505
2"	9999506
3"	9999507



Ball union Valve PVC

1 1/2"	9997141
2"	9997142



Ball Valve SS

(fnpt x fnpt)	
1/4"	699736
1/2"	699737
3/4"	699725
1"	695867
1 1/4"	695865
1 1/2"	695866
2"	695868



Butterfly Valve SS with pull handle

with viton seal	
1 1/2"	9998201
2"	9998209
3"	9998217



Orange Teflon tape
1/2" X 540" 59897



Silicone
113g 69907



Paste Teflon
250 ml 598935

Quick clamp fittings | Stainless steel



Female Threaded Fitting

1"	Clamp 1-1 1/2"	9998221
1 1/2"	Clamp 1-1 1/2"	9998227
2"	Clamp 1 1/2"	9998222
2"	Clamp 2"	9998226
2 1/2"	Clamp 2 1/2"	9998223
3"	Clamp 3"	99982245



Male Threaded Fitting

1"	Clamp 1 1/2"	9998230
1 1/2"	Clamp 1 1/2"	9998231
1 1/2"	Clamp 1 1/2"	9998232
2"	Clamp 2"	9998233



Clamp HD

Clamp 1 1/2"	9998206
Clamp 2"	9998210
Clamp 2 1/2"	9998214
Bride 3"	9998218

Insert Fitting

1"	Clamp 1"	9998251
1 1/2"	Clamp 1 1/2"	9998252
2"	Clamp 2"	9998253
2 1/2"	Clamp 2 1/2"	9998254
3"	Clamp 3"	9998220



Gasket

Clamp 1 1/2"	9998207
Clamp 2"	9998203
Clamp 2 1/2"	9998211
Clamp 3"	9998219



Cap

Clamp 1 1/2"	99982252
Clamp 2"	9998225
Clamp 2 1/2"	99982255
Clamp 3"	SFCCP34

Connecting system



Flexible Vacuum Hose Food Grade

699325	1"
699326	1 1/4"
699327	1 1/2"
699328	2"
699329	3"



Braided PVC Clear Hose

69932	3/4" - 150 PSI
69824	1" - 125 PSI
69602	1 1/4" - 100 PSI
696029	1 1/2" - 100 PSI
696031	2" - 75 PSI



Vinyl Clear Hose

69939	3/4" X 1/8" THICK - 35 PSI
6993955	1" X 1/8" THICK - 25 PSI
6993956	1 1/4" X 1/8" THICK - 20 PSI
6993959	3/4" X 1/4" THICK - 40 PSI
	1" X 1/4" THICK - 35 PSI
	1 1/4" X 1/4" THICK - 40 PSI
	1 1/2" X 1/4" THICK - 35 PSI



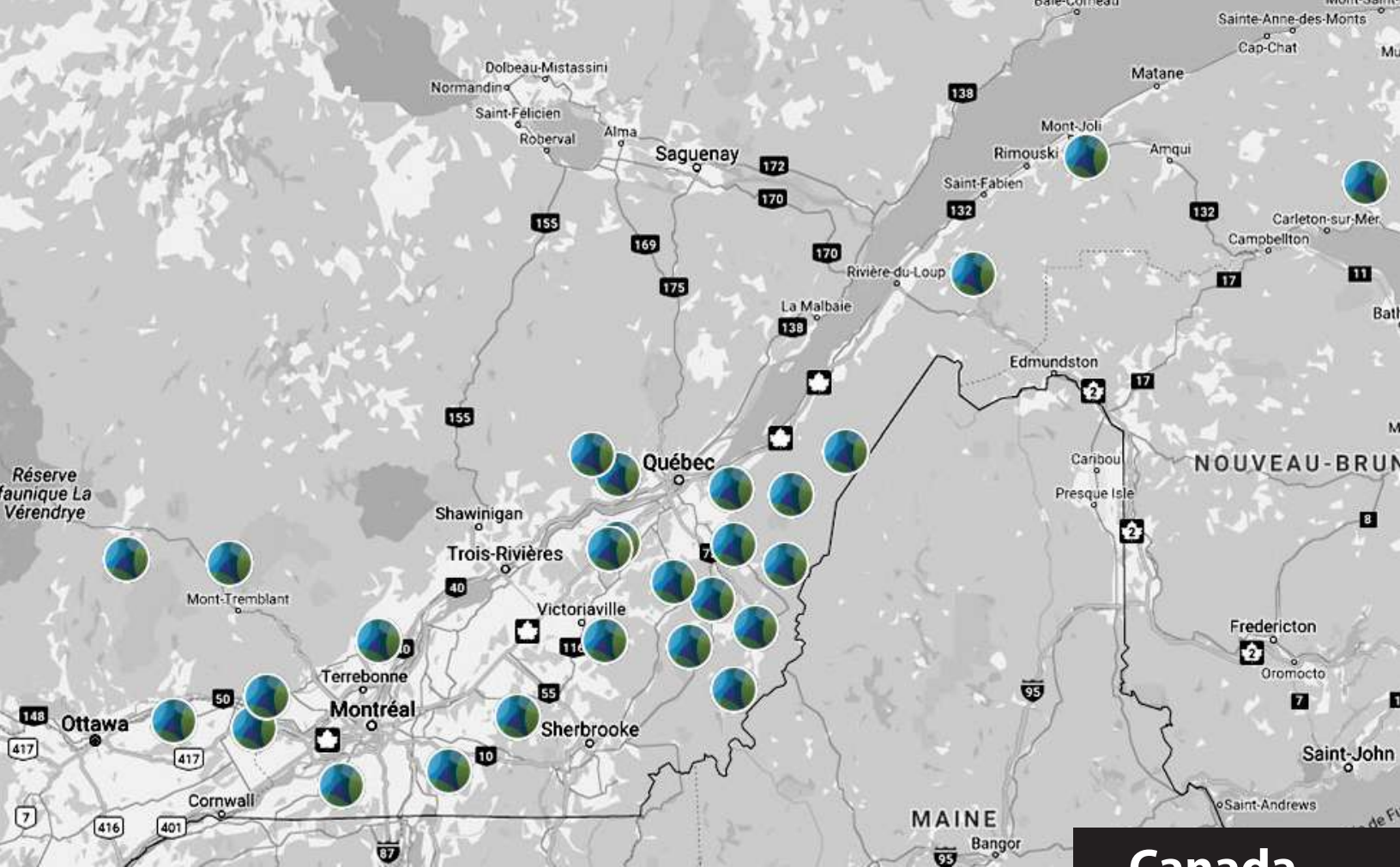
Rubber Coupling

598941	with collars - 1 1/4"
59894	with collars - 1 1/2"
598942	with collars - 2"
598943	with collars - 3"
59896	reducer with collars - 1 1/2" x 1 1/4"
598945	reducer with collars - 2" x 1 1/2"



High gloss blue reinforced PVC Hose

1/2"	128-696006
3/4"	128-696007
1"	128-696010
1 1/4"	128-696012
1 1/2"	128-696015



Canada

**Find the nearest
MEMPROTEC distributor!**

United States



Maine

WF Mason Evaporators

90 Chapel Street
Porter, ME 04068

Contact : Bill Mason
Tel. : 207-625-8089
wfmasonevaporator@gmail.com

New Hampshire

Tyler Johns

8, Depot Street North
Woodstock, NH 03262

Tel. : 603-348-6007
mountain.maples_1@yahoo.com

Windswept Maples Farm

845, Loudon Ridge Road
Loudon, NH 03307

Contact : Jeff Moore
Tel. : 603-267-8492
jeff@windsweptmaples.com

New York

Doug Beitz

1084, Creek Rd,
Attica, NY 14011

Contact : Doug Beitz
Tel. : 585-813-6623
dougbeitz@yahoo.com

Maple Chase Farm

16695 Sandy Creek Valley Road
Watertown, NY 13601

Contact : Leroy Burnham
Tel. : 315-767-2845
maplechasefarm@yahoo.com

Pleasant Valley Maple Supply

858 Pleasant Valley Road
Whitesville, NY 14897

Contact : Monroe Mast
Tel : 607-356-3537

Schweigarts Maple Equipment

804 County Route 103
Woodhull, NY 14898

Contact : George Schweigarts
Tel. : 302-236-8621
gschweigart08@gmail.com

Ohio

Stumpwater Farm LLC

29499 Clark Road
Sullivan, Ohio 44880

Contact : Al & Jared Baxter
Tel. : 419-736-3576
stumpwater@outlook.com

VanPelt's Maple Product LLC

3380 West Garfield Road
Columbiana, Ohio, 44408

Contact : Franklin J VanPelt
Tel. : 330-314-2422
fjv8@icloud.com

Pennsylvania

DL Sheets Maple Products

14942 Dickson Road
Meadville, PA 16335

Contact : Daryl L. Sheets
Tel. : 814-337-0103
sheetstool@zoominternet.net

Vermont

John Cross

1330 route 78
Alburgh, VT 05440

Tel. : 802-309-8452
jcross3071@yahoo.com

Maple Mountain Sugar House

1153 Delano Road
Albany, VT 05820

Contact : Lyman Gilman
Tel. : 802-755-6268
lymangilman@gmail.com

Roaring Brook Maple

60 South Main Street
Wallingford, VT 05773

Contact : Steve & Connie Berger
Tel. : 802-558-1931
roaringbrookmaple@yahoo.com

Jed's Maple

259 Derby Pond Road
Derby, VT 05829

Contact : Stephen Wheeler
Tel. : 802-766-2700
wheeler@jedsmaple.com

Wisconsin

Wagner Sugar Hill

W6756 Aspen Lane
Crivitz, WIS 54114

Contact : Charles & Ross Wagner
Tel. : 715-927-4022
wagnerssugarhill@hotmail.com

Smoky Lake Maple Products

208 N 12th St
Hilbert, WIS 54129

Contact : Jim & Angela Schumacher
Tel. : 920-202-4500
jim@smokylakemaple.com

Bas-Saint-Laurent

Ferme Couturval

580, rang Couturval
Amqui, Qc, G5J 1X2

Contact : Pierre Couture
Cell. : 418 631-9358
couturval@gmail.com

René Ouellet

237, rue Principale
Saint-Pierre-de-Lamy, Qc, G0L 4B0

Tel. René : 418 714-4666
Tel. Anne : 581 337-1558
rene-ouellet@hotmail.com

Capitale-Nationale

Bois de chauffage Cantin

4 rue des Pêcheurs
Pont-Rouge, QC G3H 2N3

Contact: Henrick Cantin
Cell: 418-558-8230
boiscantin@gmail.com

LS Bilodeau (Division Qc)

1025 2e rang
Neuville, Qc G0A 2R0

Tel. : 418 876-0006
qqproduction@lsbilodeau.com

Centre-du-Québec

Les équipements d'érablières Stars

437 avenue Normand
Laurierville, Qc G0S 1P0

Contact : Christian Gagnon
Tel. : 819 362-5549
lesequipementserablieresstars@outlook.com

Chaudière-Appalaches

Équipements DG Marcoux

930 avenue Principale
Saint-Elzéar, Qc, G0S 2J0

Contact : Gérald Marcoux
Tel. : 418 387-1398 / 418-387-7848
gerald.marcoux@axion.ca

Francis Gauthier

181 Rang 8
Saint-Adalbert, Qc, G0R 2M0

Tel. : 418 356-2344
Cell. : 418 356-6587
limousinedantan@hotmail.com

Installation et équipements d'érablière KL

13 rue de la Chute
Beaumont, QC G0R 1C0

Contact : Kaven Lavallée
Cell : 418-625-0053
info@iekline.com

L.S. Bilodeau

281 route 108 Est
St-Éphrem-de-Beauce, Qc, G0M 1R0

Tel. : 418 484-2013
Sans frais : 1-888-557-4767
info@lsbilodeau.com

Patrick Nadeau

16 route de la Station
St-Euphémie, QC G0R 2Z0

Tel. : 581 745-5433
pnadeauls@hotmail.com

Produit de l'érable St-Ferdinand B

185 Rte 165
Irlande, Qc, G6H 2N7

Contact : Bruno Boutin
Tel. : 418 428-9381
info@produitdelerable.com

Roger Rodrigue

442 rue Principale
St-Cyprien-Des-Etchemins, Qc, G0R 1B0

Cell. : 418 625-0345
roger.rodrigue@sogetel.net

Estrie

BHR Experts

Contact : Maxime Hallé

70 Chemin Lachance
Audet, Qc, G0Y 1A0

Tel. : 819 583-5330
Fax : 819 583-1350
info@bhrexperts.com

Gaston Fortier

379 rue Principale
St-Romain, Qc, G0Y 1L0

Tel. : 418 486-7579
Cell. : 418 334-3501
gastonhd@hotmail.ca

Ferme Les Perron

750 Route 108
Bury Qc, J0B 1J0

Contacts :
Alexandre Blais : 819 347-4297
Yves Fauteux : 819 347-5623
Tel. : 819 872-3760
Fax : 819 872-1190
lesperron@xittel.ca



Nation de l'érable Brien

365 9e rang Ouest
Sainte-Anne-de-la-Rochelle, Qc, J0E 2B0

Contact : Patrice Brien
Tel. : 450 522-2293
pbrien55@hotmail.com

Lanaudière

Acerbrix

1032 François-Olivier
L'Assomption, Qc, J5W 0G3
et
3700 Rang St-Anne
St-Norbert, Qc, J0K 3C0

Contact : Christian Rail
Tel. : 514 915-4735
equipementsacerbrix@gmail.com

Laurentides

Érablière Jacques Caron

14 Chemin de la Sucrierie,
Val des Lacs, QC J0T 2P0

Contact : Jacques Caron
Tel. : 418 837-0440
jacroma1@gmail.com

Yohann Touchette

50 chemin Émard
Kiamika, QC J0W 1G0

Cell : 514-424-2752
touchetteyohann@gmail.com

Montérégie

Martin Trudeau Services Acéricoles

790 1er rang Ouest
Ste-Christine, Qc, J0H 1H0

Cell : 438 377-9273
Bur. : 819 248-1016
info@servicesacericoles.ca
www.servicesacericoles.ca

Philippe Bourdeau

460 rang Saint-Charles
Havelock, Qc, J0S 2C0

Cell : 514-318-9102
bourdeauphilippe@hotmail.com

Sylvain Rainville

15 Rue Saint-Joseph
Bedford, Qc, J0J 1A0

Tel. : 450 248-4203
Cell. : 514 222-3501
sylrainvil@hotmail.com

Gaspésie

Distribution Leblanc

173, Armand-Lelièvre
New-Richmond, QC, G0C 2B0

Contact : Serge Leblanc
Bur : 1 877 792-5952
Cell : 418 391-1004
serge@distributionsleblanc.com

Nouveau-Brunswick

Les Équipements Bouchard

1584 chemin Val D'Amours
Val D'Amours, NB, E3N 5N5

Contact : Jean-François Bouchard
Cell. : 506 987-3701
lesequipementsbouchard@gmail.com

Ontario

Charles & Morgan Summers

357 Sweets Corners RD,
Lyndhurst, ON K0E 1N0

Tel. : 613 331-1078
farm@saltofkingston.com

Éric Bélisle

376 Route 200 E.
Casselman, Qc, K0A 1M0

Tel. : 613 764-2289
Cell. : 613 223-4585
belisesugarbush@yahoo.ca

François Brunet

22400 County Road 10
Glen Robertson, ON, K0B 1H0

Tel. : 613 874-2864
Cell. : 613 360-9572
francoisbrunet.lsblodeau@gmail.com

VERMONT OPEN HOUSE

SWANTON, VT

April 26-27, 2024

April 2025



Open House

Chesterville, QC

May 17-18, 2024

May 2025



MEMPROTEC

UNITED-STATES

555 VT route 78
Swanton VT 05488

Telephone : 844-382-2244
Cel/Text Stephane : 819 571-2778
Fax : 819-382-2111

CANADA

5133, de la Plaisance
Chesterville (QC), G0P 1J0, Canada

Telephone : 819-382-2244
Fax : 819-382-2111

info@memprotec.com



Follow us on Facebook

www.memprotec.com