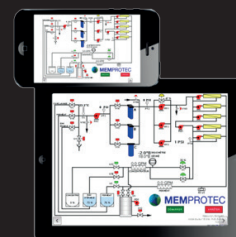


# Reverse osmosis | SS Series MemPro Stainless Steel



**Optional**  
Remotely controlled  
via web access

## MemPro 1000 H - 6000 H-SS

- Superior quality & performance
- Modular conception
- Positive recirculation on membrane elements
- Stainless steel construction frame & plumbing
- Stainless steel pumps with industrial motors (top mounted)
- Stainless steel modular CIP tank
- Ventilated stainless steel electrical box
- Permeate & concentrate valve panel
- Option of expansion up to 8 elements & 4 high pressure pumps
- Programmable logic controller
- Conductivity meter & digital temperature monitor
- Low pressure & high temperature safety
- 2 independant banks of 2 X 20 inch filter housings
- Strainer included
- 5 years limited warranty

### Options :

- + Wash water management with pH meter
- + Drainage by air «Mempro Flush» patent # US 8,889,001 B2
- + Individual vessel permeate flow meters
- + HMI with web access
- + Interstages booster pumps
- + Inline brix monitor
- + SS valves
- + 230V - 460V - 600V - 3 phases
- + Complete automation

Model	Membrane Quantity	Prefilter 5 microns	Feed Pump	Pressure Pump	Recirculation Pump	Amps. 240 volts	Dimensions (L x D x H)
MemPro 1000 H-SS	1 x 8"	4 x 20"	2,5 hp	1 x 5 hp	1 x 1,5 hp	35	69" x 33 1/2" x 73" + 19"
MemPro 2000 H-SS	2 x 8"	4 x 20"	2,5 hp	1 x 5 hp	2 x 1,5 hp	45	69" x 33 1/2" x 73" + 19"
MemPro 3000 H-SS	3 x 8"	4 x 20"	2,5 hp	2 x 5 hp	3 x 1,5 hp	70	69" x 33 1/2" x 73" + 19"
MemPro 4000 H-SS *	4 x 8"	4 x 20"	2,5 hp	2 x 5 hp	4 x 1,5 hp	77	69" x 33 1/2" x 73" + 19"
MemPro 5000 H-SS	5 x 8"	4 x 20"	2,5 hp	3 x 5 hp	5 x 1,5 hp	103	69" x 33 1/2" x 90" + 19"
MemPro 6000 H-SS	6 x 8"	4 x 20"	2,5 hp	3 x 5 hp	6 x 1,5 hp	110	69" x 41" x 90" + 19"