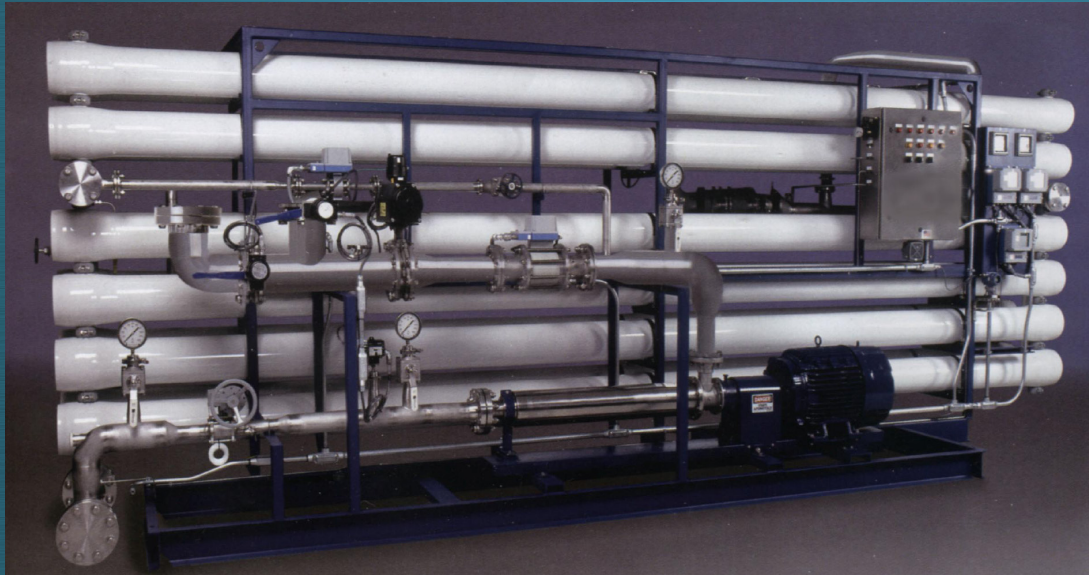




# MEMPROTEC

## SIGMA Standard Series

Reverse osmosis or nanofiltration system



- Stainless steel high pressure pump
- High pressure SS or FRP membrane housings
- Sediment cartridge prefilter
- Flow & conductivity meters
- Epoxy painted steel frame
- PLC control
- System status display screen
- Low pressure & high temperature protection
- Pretreatment interlock
- Clean-in-place CIP system (option)
- NEMA4 electrical panel (option)

Model	Number of membranes (8" x 40")	Maximum capacity (SDI<1, 25°C)		Motor (hp)	Weight (lbs)	Length (in)	Width (in)	Height (in)
		GPM-US	GPD-US					
SIGMA-12	12	40	57 600	15	2 650	216	48	66
SIGMA-16	16	60	86 400	20	3 450	216	48	66
SIGMA-24	24	80	115 200	20	4 790	216	62	66
SIGMA-30	30	110	158 400	25	6 650	288	62	76
SIGMA-36	36	130	187 200	25	7 600	288	62	86
SIGMA-48	48	175	252 000	40	9 200	300	80	72
SIGMA-60	60	225	324 000	50	11 000	300	80	78

MEMPROTEC Inc. 5133, de la Plaisance, Chesterville (Québec) G0P 1J0



819-382-2244



819-382-2111



info@memprotec.com



www.memprotec.com